

February 7, 2022

30% Design Community Meeting

OTC – East Campus (Site 512-T-E-1)

Please sign in on your mobile device:



**Orange County
Public Schools**

OTC – East Campus (Site 512-T-E-1) Meeting Agenda

- February 7, 2022 at 6:00pm
 - Welcome – Angie Gallo, School Board Member, District 1
 - Introductions – Lauren Roth, Senior Manager, Facilities Communications
 - CTE Overview – Melanie Stefanowicz, Associate Superintendent, Career and Technical Education
 - Project Update – Architect: DLR Group
Contractor: CPPI
 - Orange County Planning Presentation
 - Questions and Answers

Orange Technical College Vision



Orange Technical College– Avalon Campus



Orange Technical College– South Campus



Orange Technical College– Main Campus



Orange Technical College– West Campus



Orange Technical College– East Campus

Orange Technical College Programs

OTC – West Campus:

- Construction Trades
- Welding Technology
- Apprenticeship
- Human Services
- Veterinary Assisting

Orange Technical College:

- Health Science Focus

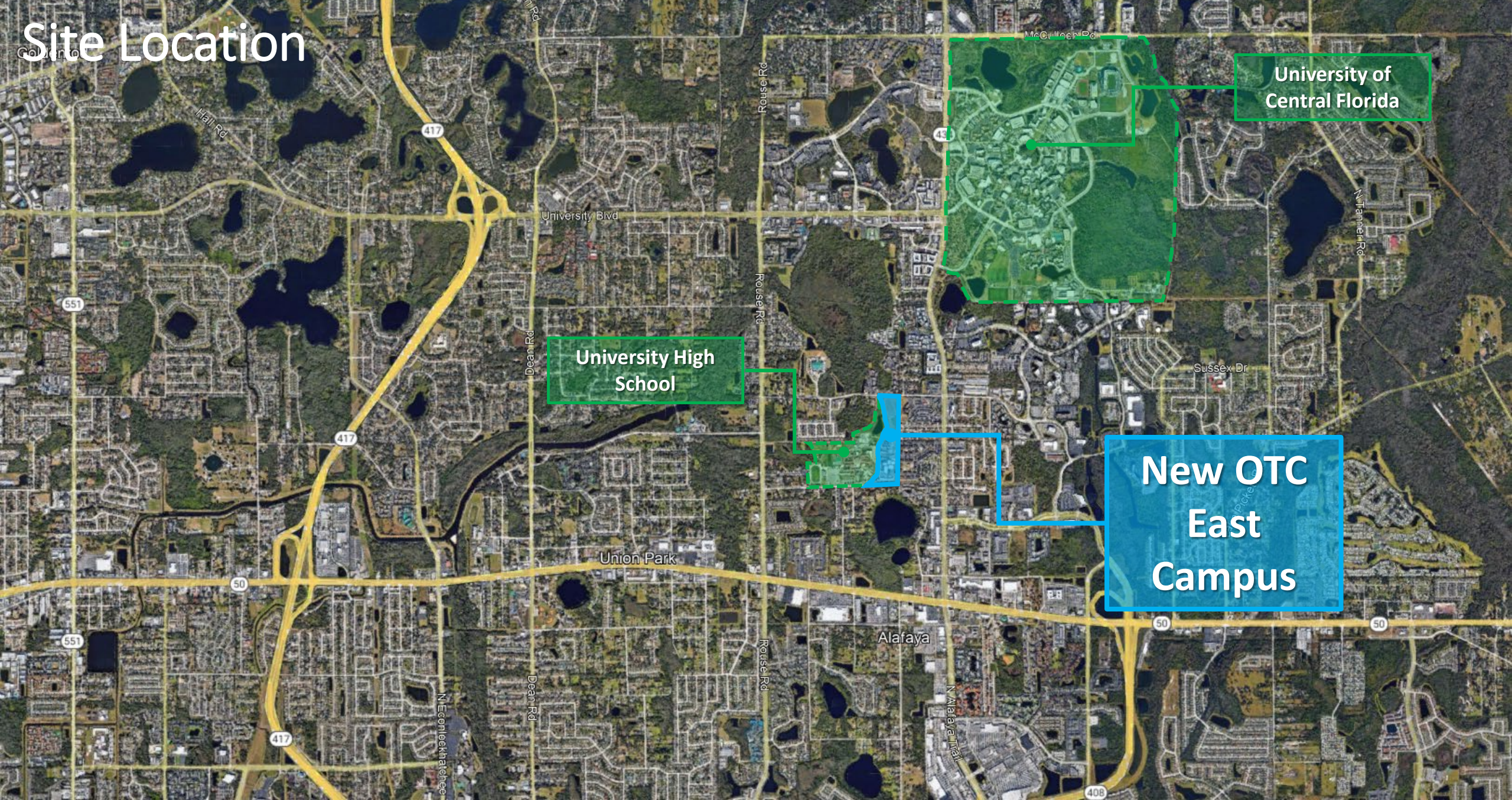
OTC – South Campus:

- Industrial
- Transportation
- Manufacturing
- Culinary
- Hospitality
- Adult Education

OTC – East Campus (Site 512-T-E-1):

- Information & Digital Technology

Site Location



University of
Central Florida

University High
School

New OTC
East
Campus

Site Aerial



OTC – East Campus (Site 512-T-E-1)

Site Development

PLANNING

Rezoning hearing to allow change of use

ACCESS

Lokanotosa Trail (Main)

Eastwood Dr (Secondary)



Stats

- Project Budget is \$45,324,000
- 1,000 Students
- 31 acres
- Opening Early 2024



Campus Programs

- Career Pathways:
 - Arts, AV, Technology & Communications
 - Business Management & Administration
 - Information Technology
 - Applied Cybersecurity
 - CompTIA A+
 - CompTIA Net+
 - Enterprise Desktop and Mobile Support
 - Gaming & Simulation
 - Modeling Simulation Design & Production



Building Program

+/- 99,500 SF

1008 Student Stations

ADMINISTRATION

- Offices
- Welcome Desk
- Admissions
- Financial Aid
- Business Office
- Career Services

AMENITIES

- Recording Lab
- Screen Room Projection Booth
- Student Commons

DIGITAL AUDIO PRODUCTION

- MIDI Computer Classroom
- POD Casting Studio
- Recording Lab

DIGITAL CINEMA PRODUCTION

- Sound Stage
- Computer Lab
- Screening Room
- Projection Booth
- Surround Sound Lab
- Small Studio and Control Room



Building Program

+/- 99,500 SF

1008 Student Stations

GENERAL EDUCATION

- Labs
- Classrooms
- Outdoor Learning
- Storage

3D ANIMATION TECHNOLOGY

- Motion Capture Stage
- Computer Labs
- Audio Booth
- Conference Space

DIGITAL PHOTOGRAPHY PRODUCTION

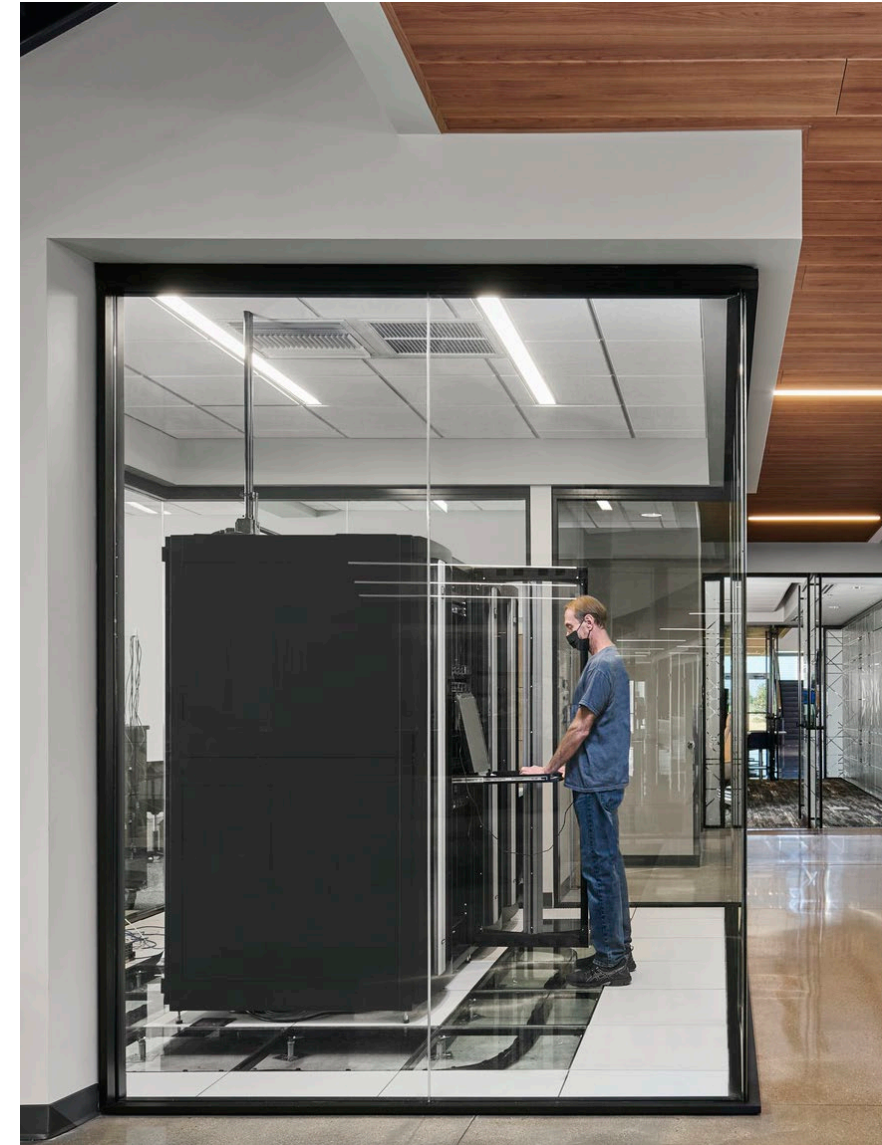
- Print Review Room
- Photography Studio
- Computer Lab

DIGITAL MEDIA TECHNOLOGY

- Production Workroom
- Arts & Av Equipment Room (Shared)
- Computer Labs

INFORMATION TECHNOLOGY

- IT Workroom
- Simulation Lab
- Computer Labs



Innovations

- Technology Rich
- Collaborative
- Leading Edge
- Industry Partnering
- Sustainable
- Safe & Secure



10% Community Meeting Discussion Points

1 **Adaptability**

Incorporate flex spaces for future programs; move programs in and out of facility as needed; adaptability for prospective needs

2 **Location**

Capitalize on location, proximal to nearby universities

3 **Collaboration**

Use spaces to promote industry responsiveness & collaboration among instructors and students

4 **Inspire**

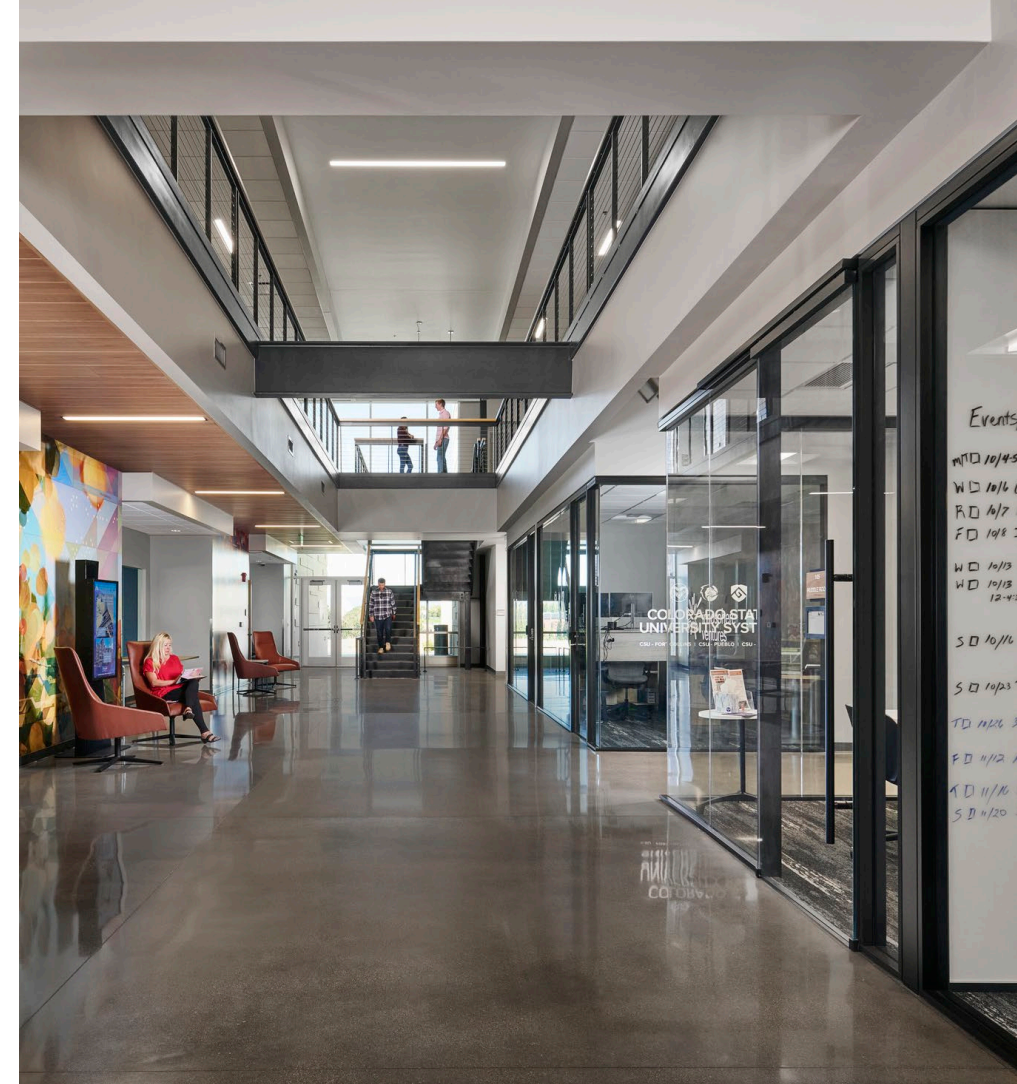
Hope is to inspire career achievements, success stories & career readiness

5 **Hands-On**

Hands on learning opportunities, allotting students the capabilities to be career ready – transforming the student experience to be more immersive, reflective of real-life applications

6 **Sustainability**

Sustainable considerations – outdoor spaces with shading, energy sources, solar array / technology compatible furniture / smart furniture, material usage, conservation, etc.



10% Community Meeting Discussion Points

7 **Learning Flexibility**

Indoor – outdoor connections / learning spaces

8 **Branding**

Opportunity to use the building as a learning tool – exhibit the education to expand knowledge

9 **Learning on Display**

- Call attention to the building, what it houses; put the material on display
- Zero in on transparency, display how the space is utilized through exposure of equipment – active observation & tour space

10 **Nature Integration**

Nature trail – optimize & provide access to existing trail (modes of accessibility: bike, walk)

11 **Experiential**

Generate spaces that create an experience and celebrate what the new facility can offer on and off campus



Site Plan

PARKING
490 parking spaces

UHS ACCESS
Sidewalk connects University High School with OTC.

OCPS BUS ACCESS
Access for buses and deliveries from Cougar Way (W).
6 Bus Stacking at Drop-off (W)



Sustainability



Site:

- Low Impact Design (LID) stormwater design
- Native/low water plants – reduce water consumption

Building:

- High Efficiency Chillers (8% energy reduction)
- Light colored roof to reduce heat gain and improves energy performance
- Energy Star rated equipment
- Water saving toilets, faucets, and fixtures
- All general classrooms have daylighting
- Thermal efficient windows/glazing
- Fully automated building controls system 10% more energy



Schedule

Design Phase Start:	Fall 2021
Design Phase Completion:	Fall 2022
Construction Phase Start:	Fall 2022
Project Opening:	Early 2024



Orange County Rezoning Presentation





Questions & Answers