



# 30% Design Community Meeting Site 47-E-W-4

---

*October 26<sup>th</sup> 2022*

Please sign in on your mobile device:  
<https://communitymeeting.ocps.net/>

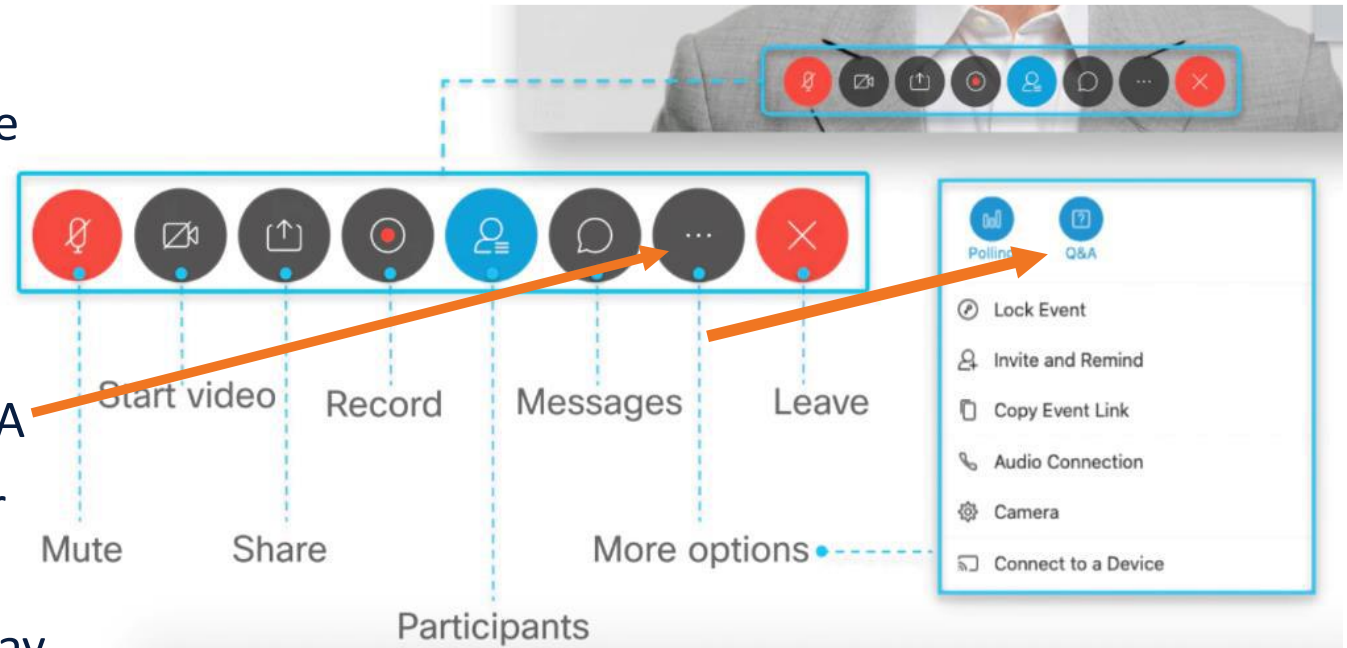


# 30% Design Community Meeting

## Site 47-E-W-4

Welcome! To give everyone the opportunity to have their questions addressed:

- All participant audio lines will be **muted**.
- Use **Q&A** to enter your question.
  - Click on the “...” on your toolbar | select Q&A
- The meeting host will read question(s) aloud for response by the panel.
- If your question needs to be clarified, the host may unmute your line.





# Welcome Message

District 4 School Board Member

Pam Gould

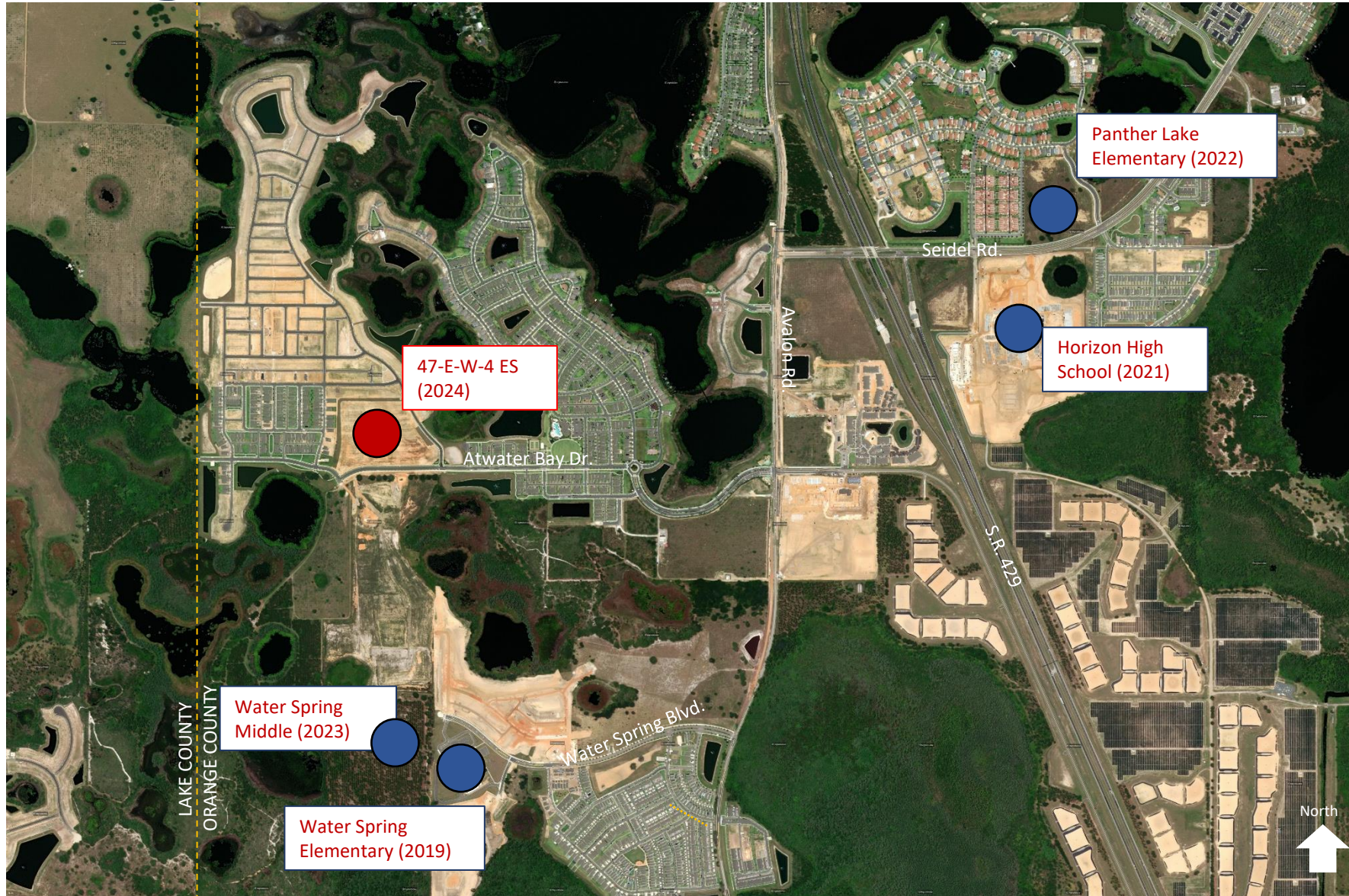


# Introductions

Facilities Director, Construction & Planning  
Jessma Lambert



# Surrounding Context



# Site Plan



## 20% Car Stacking Requirement

Student Stations: 837

$20\% \times 837 = 168$  Vehicles

$168 \times 20' = 3,360$  linear feet required

REQUIRED: 3,360 Linear Feet

**PROVIDED: 3,550 Linear Feet (178 Cars)**

## Bus Stacking

Total Length: 1,538 Linear Feet

~40' Bus Length

$1,538 / 40 = 38$

**38 Total Bus Stacking**

# The Stats



Construction Budget: \$30,000,000



837 Student Stations



Site Size: 15 Acres



Opening 2024



# Program Elements

The New Elementary School will be designed with...



Classrooms  
“Discovery” STEM Lab  
Art Room  
Music Room  
Cafeteria  
Innovative Media Center

Advanced Technology  
Sustainable Building Systems  
Physical Education Amenities  
Car & Bus Loops  
Single, secure point of entry

...For all new elementaries 2024 AND beyond

# Sustainability

## Sustainable Design Criteria



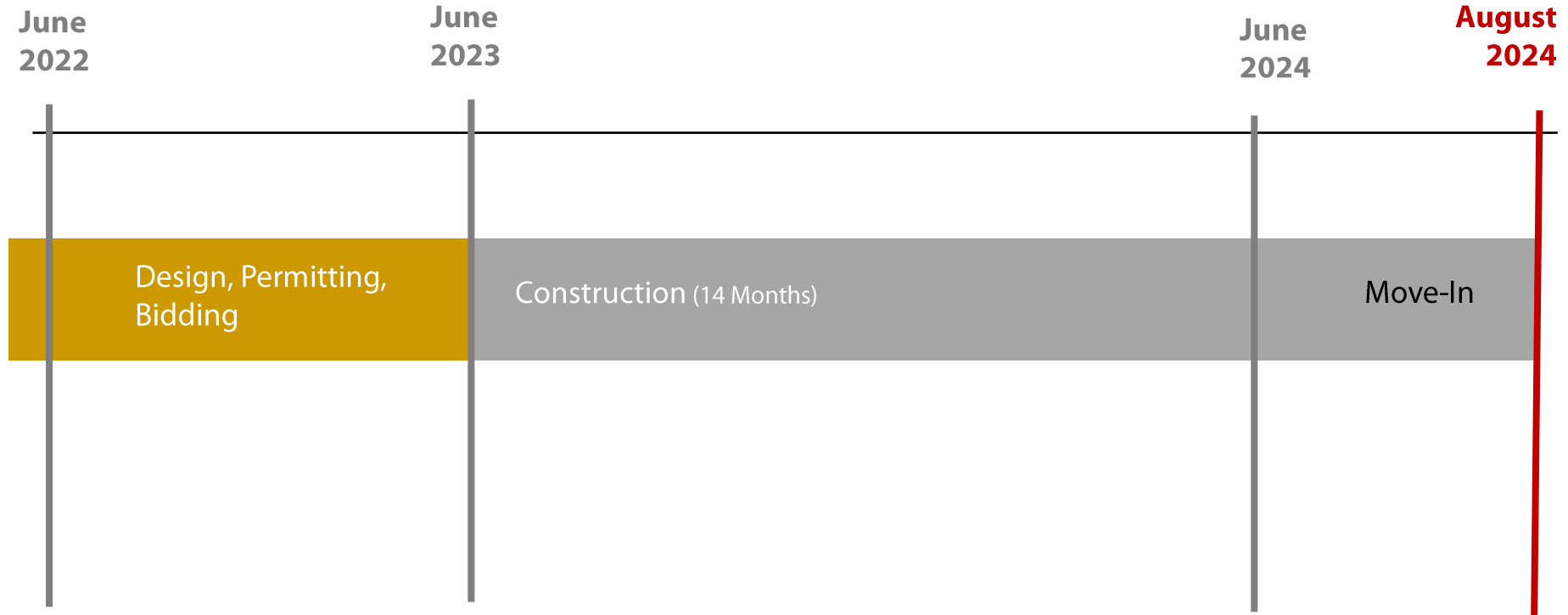
## Building

- 10% more energy efficient than ASHRAE 90.1 standard
- High Efficiency Chillers (15% energy reduction)
- Light colored roof to reduce heat gain and improves energy performance
- Energy Efficient LED Lighting
- Energy Star rated equipment
- Water saving toilets, faucets, and fixtures
- All classrooms have daylighting
- Over 75% of ALL spaces have daylighting
- Thermal efficient windows/glazing

## Site

- Native/low water plants – reduce water consumption
- Low Impact Design (LID) stormwater design

# Schedule



# Questions & Answers

This Community Meeting Presentation is posted  
at [facilities.ocps.net](https://facilities.ocps.net) and on the School Board Member's page.

**Our Promise. Your Support. Their Success.**

**Our Promise. Your Support. Their Success.**

**Our Promise. Your Support. Their Success.**

***Thank You***

