

October 19th, 2021, 5:30 PM

40% Construction Community Meeting

Site MS 132-M-W-4

Welcome! This meeting will begin shortly.



**Orange County
Public Schools**

Site MS 132-M-W-4 Meeting Agenda

October 19th, 5:30PM

- Welcome – School Board Member, Vice Chair Pam Gould
- Introductions – Lauren Roth
- School Update - Dr. Jennifer Cupid-McCoy
- Project Update
 - Architect: HuntonBrady Architects
 - Construction Manager: Welbro Construction
- Questions and Answers
- Adjournment

***Welcome Message from
District 4 Board Member
Pam Gould***



***Introductions by Senior manager,
Facilities Communications***

Lauren Roth



***School Update from
Area Superintendent
West Learning Community
Dr. Jennifer Cupid-McCoy***



Site MS 132-M-W-4 Key Dates

Note: This timeline is tentative

December 2021: Principal position advertised; interviews take place. Area superintendent sends recommendation to superintendent.

January 2022: Superintendent recommends top candidate to School Board for approval. New principal begins interviewing and extending offers to CC/PSC teachers from feeder schools.

February-March 2022: Principal surveys the school community for input on school name, mascot and colors. Principal begins interviewing and extending offers to CC/PSC and Annual teachers district-wide.

March-April 2022: Area Superintendent submits top school names to School Board for approval.

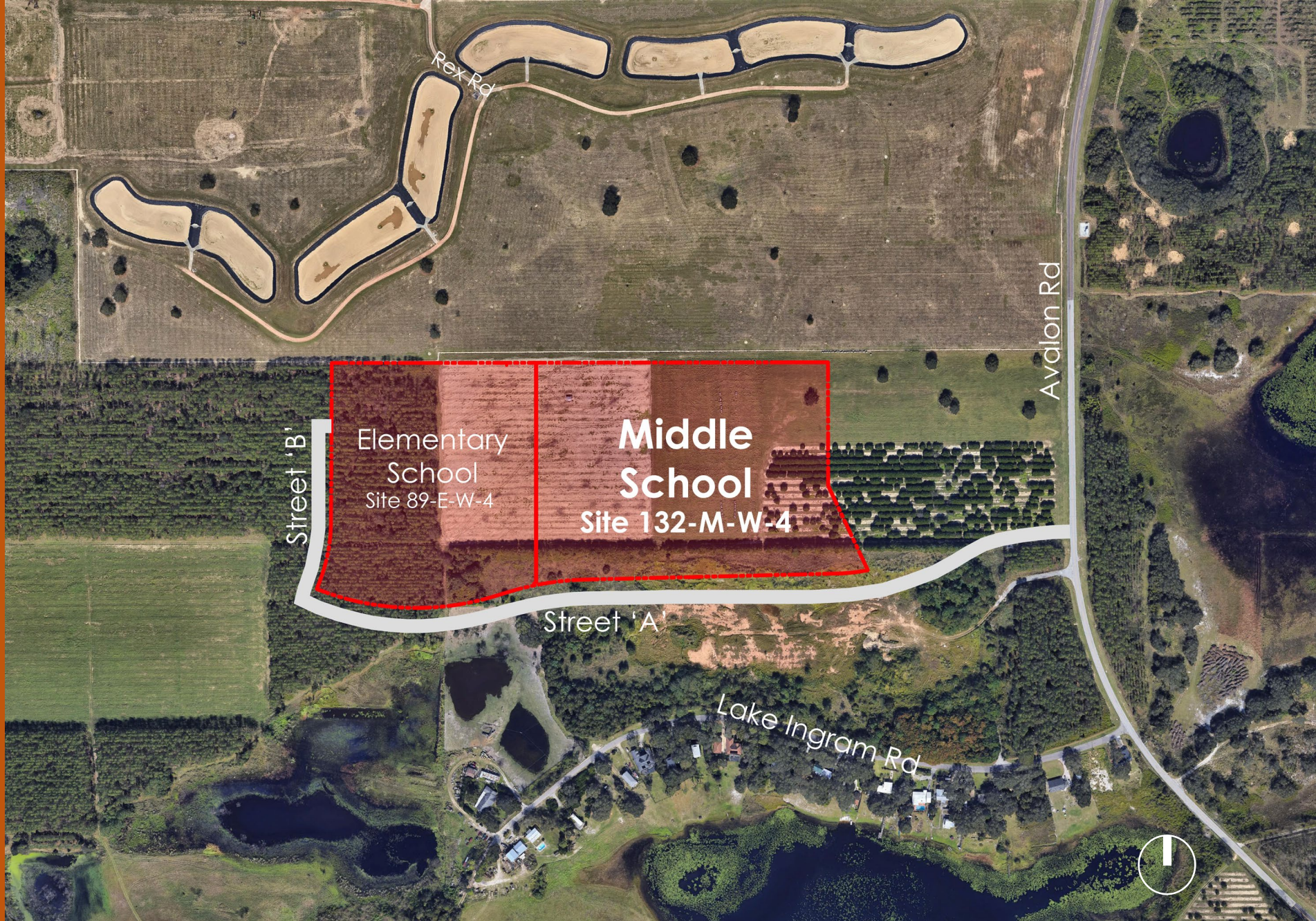
Vicinity Map

New Campus on new site to meet District Standards for Middle Schools:

- Prototypical Design

Enhanced Learning Environment:

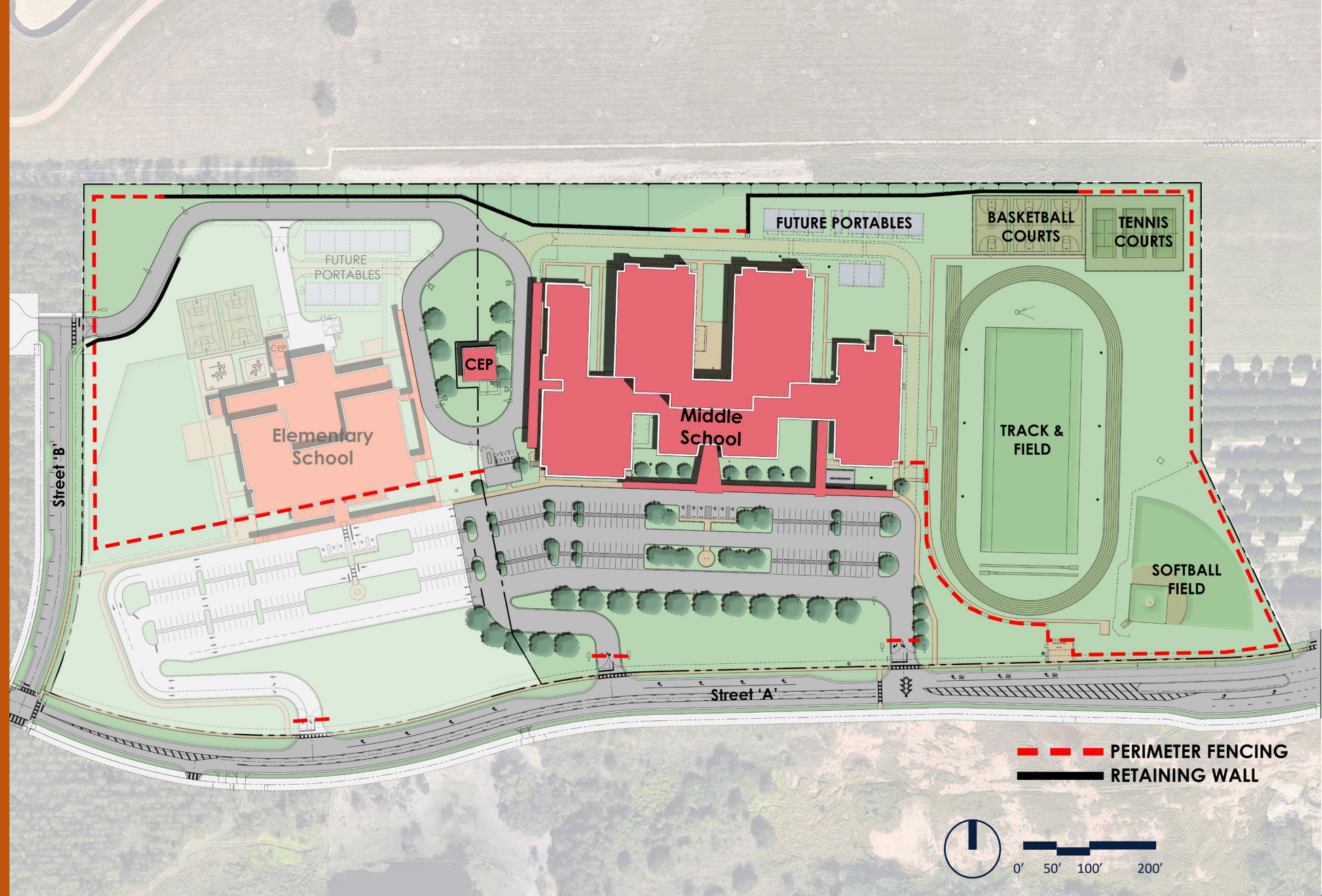
- Latest Technology
- Planned Site Circulation
- Safety & Security
- Community Asset



Site Plan

Site

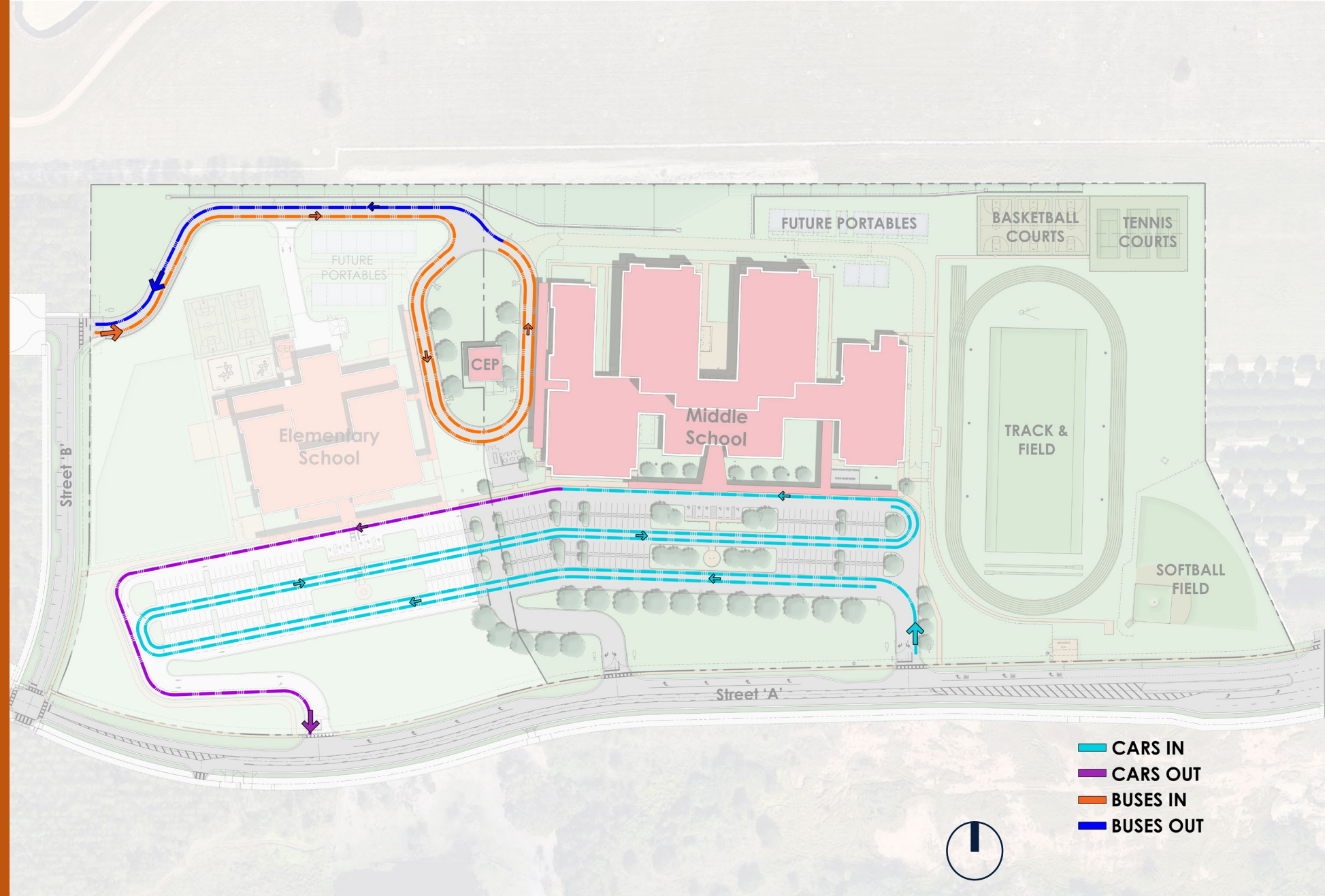
- 21 Acre Middle School Site
- Elementary School Site Adjacent to Middle School
- Separate Bus and Parent Entry Driveways
- Separate Bus and Parent Loading
- Joint Bus Loop
- Separate Bus Drop-Off ES and MS
- Car Queue
- Service Loop
- Site Parking Spaces
- Play Fields / Courts
- Future Portables



Example Vehicle/Bus Drop-off

☑ Site Circulation

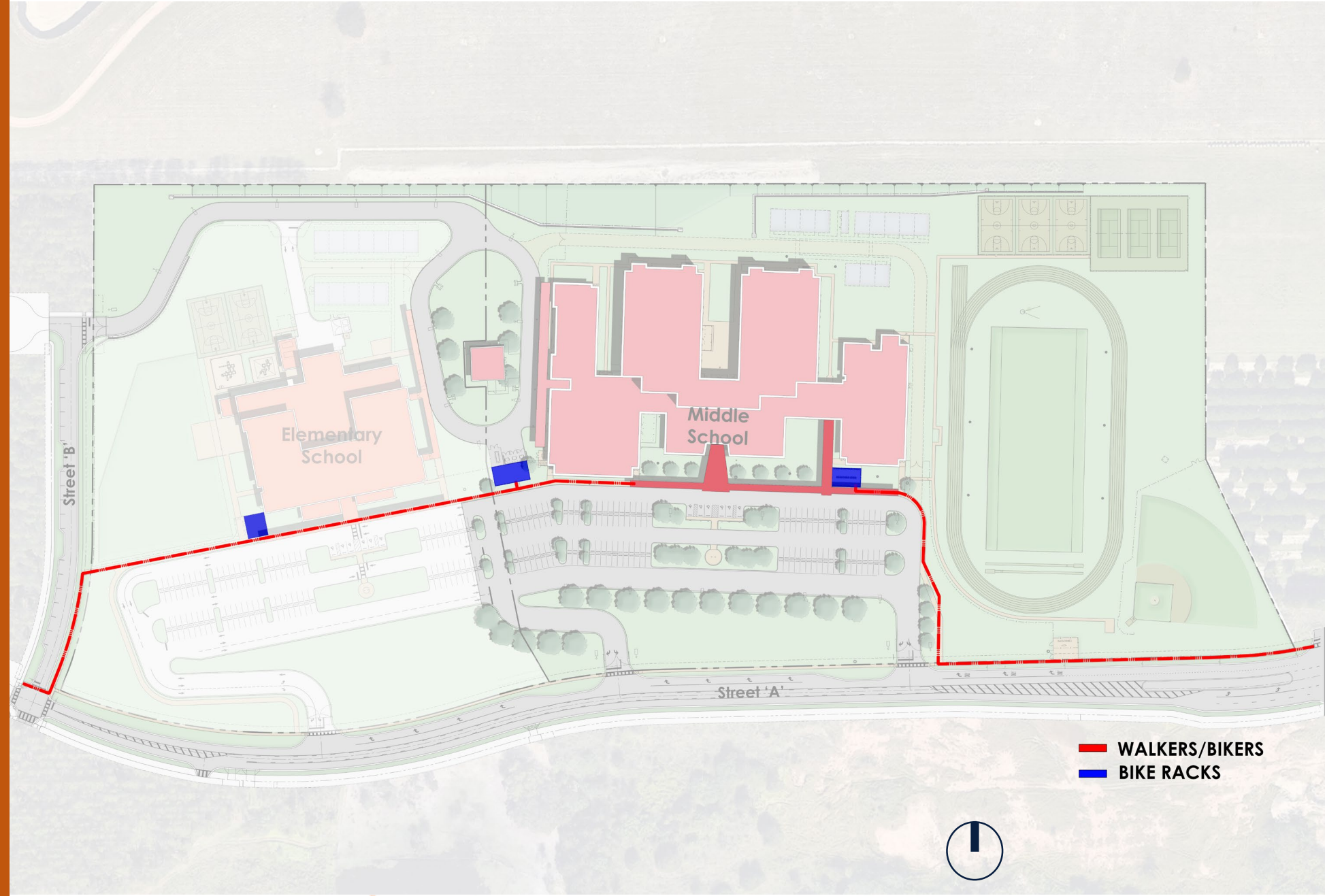
- On-site car stacking
Queue for 291 cars
- On-site parking
170 parking space
- Bus loop
25 bus capacity
- Service Loop



Example Pedestrian/ Bike

☑ Site Circulation

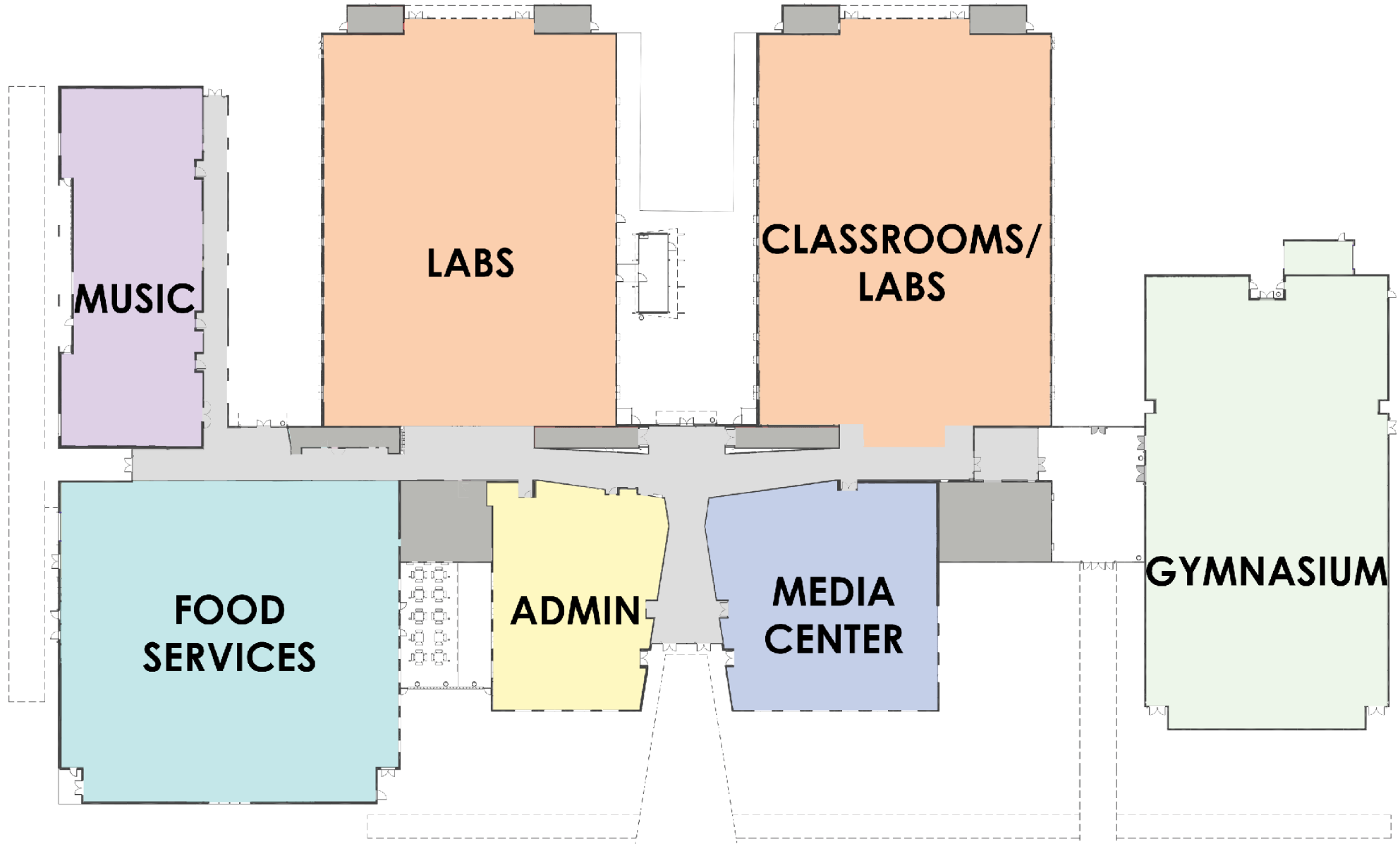
- Covered walkways
- Safe pedestrian paths
- Bike racks with 172 Bike capacity with additional 102 bike expansion space



— WALKERS/BIKERS
■ BIKE RACKS

LEGEND



- Food Services
- Administration
- Physical Education
- Music
- Classrooms
- Media Center
- Support Areas

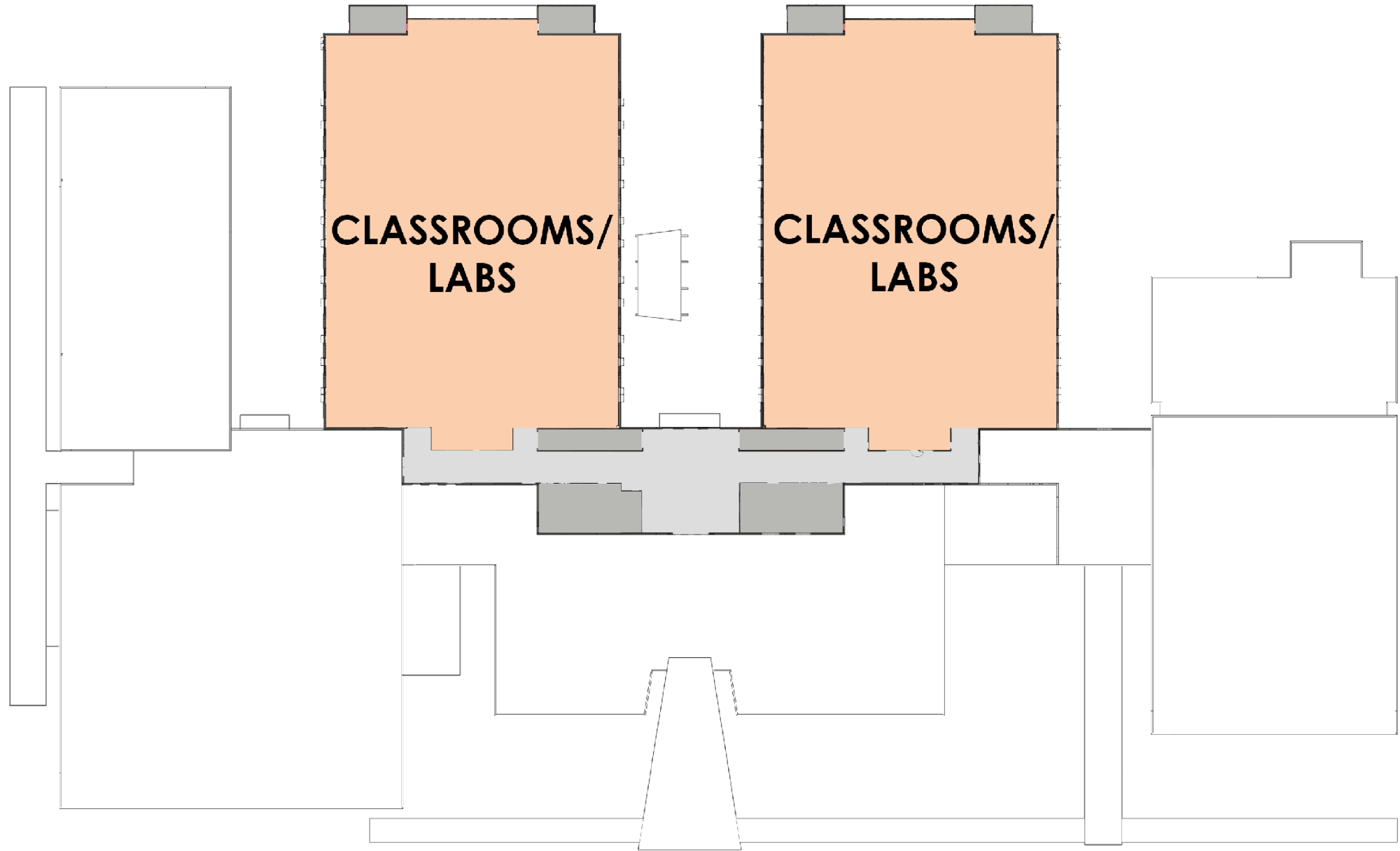


FLOOR PLAN - LEVEL 1



LEGEND

-  Classrooms
-  Support Areas



FLOOR PLAN - LEVEL 2







Sustainability



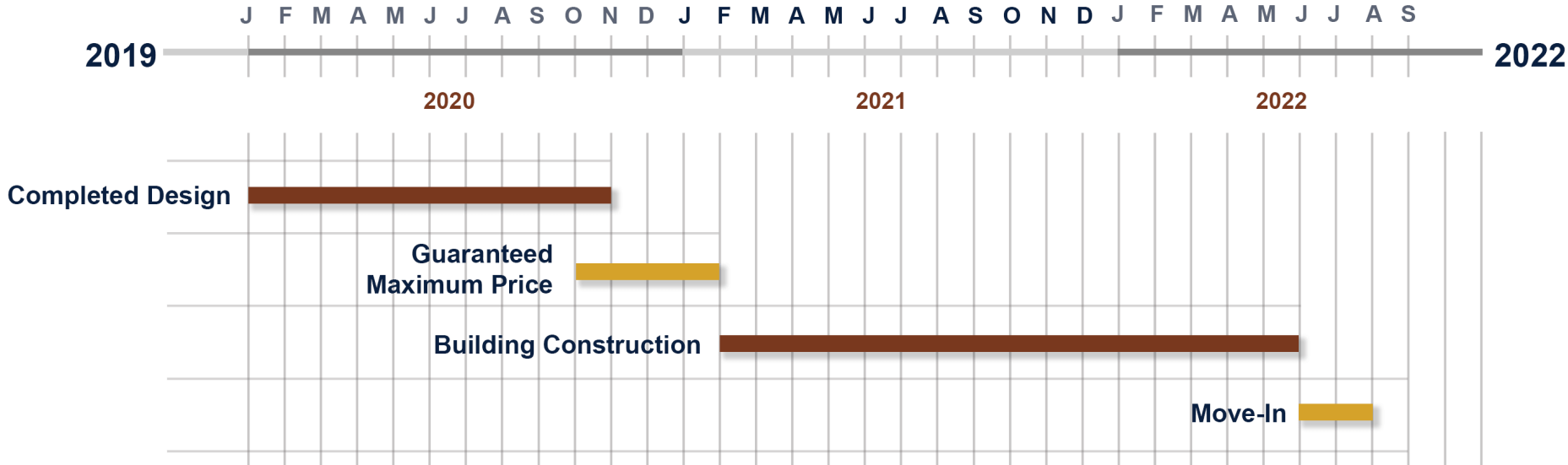
Site:

- Low Impact Design (LID) stormwater design
- Native/low water plants – reduce water consumption

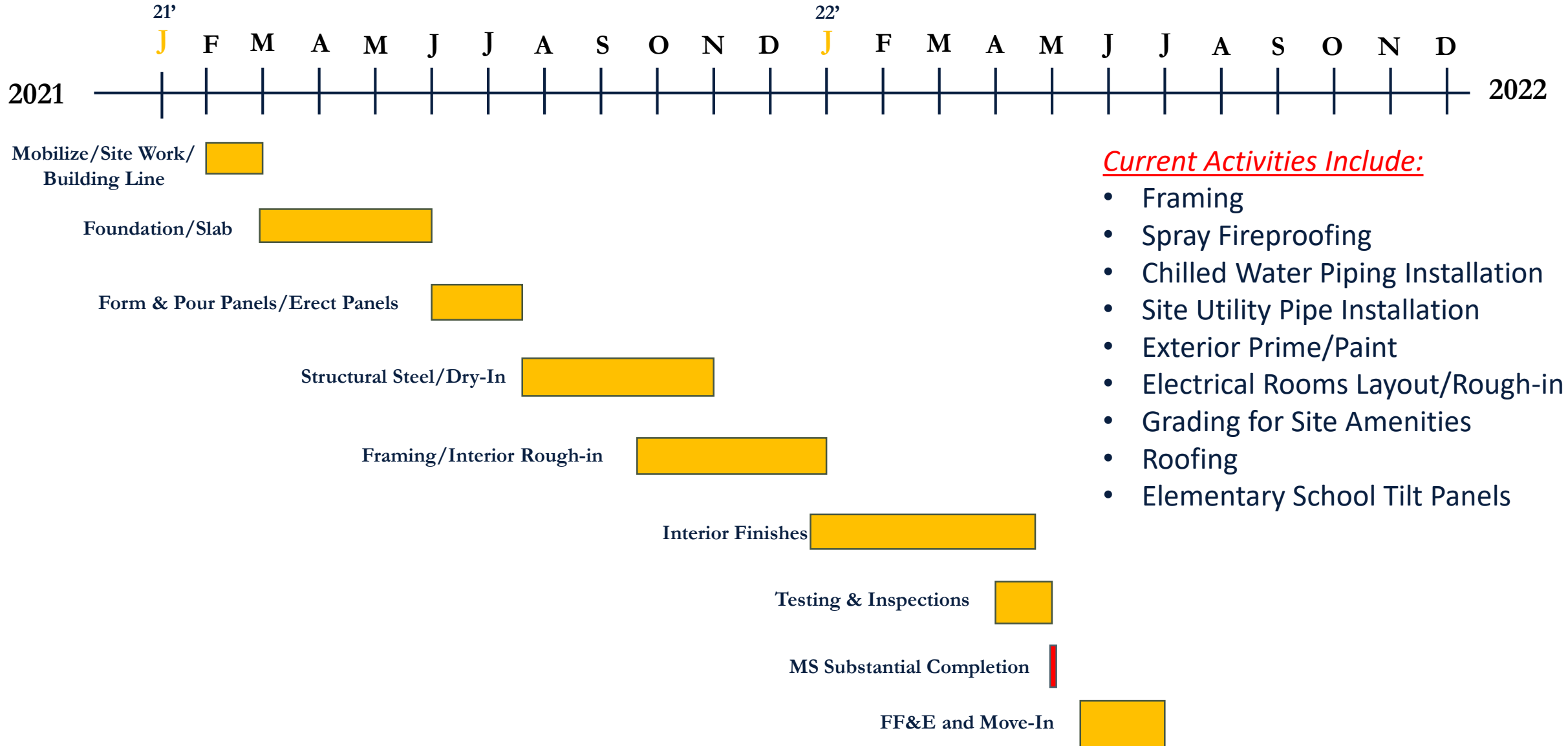
Building:

- High Efficiency Chillers (8% energy reduction)
- Light colored roof to reduce heat gain and improves energy performance
- Energy Star rated equipment
- Water saving toilets, faucets, and fixtures
- All general classrooms have daylighting
- Over 85% of ALL spaces have daylighting
- Thermal efficient windows/glazing
- Fully automated building controls system 10% more energy

Design & Construction Schedule

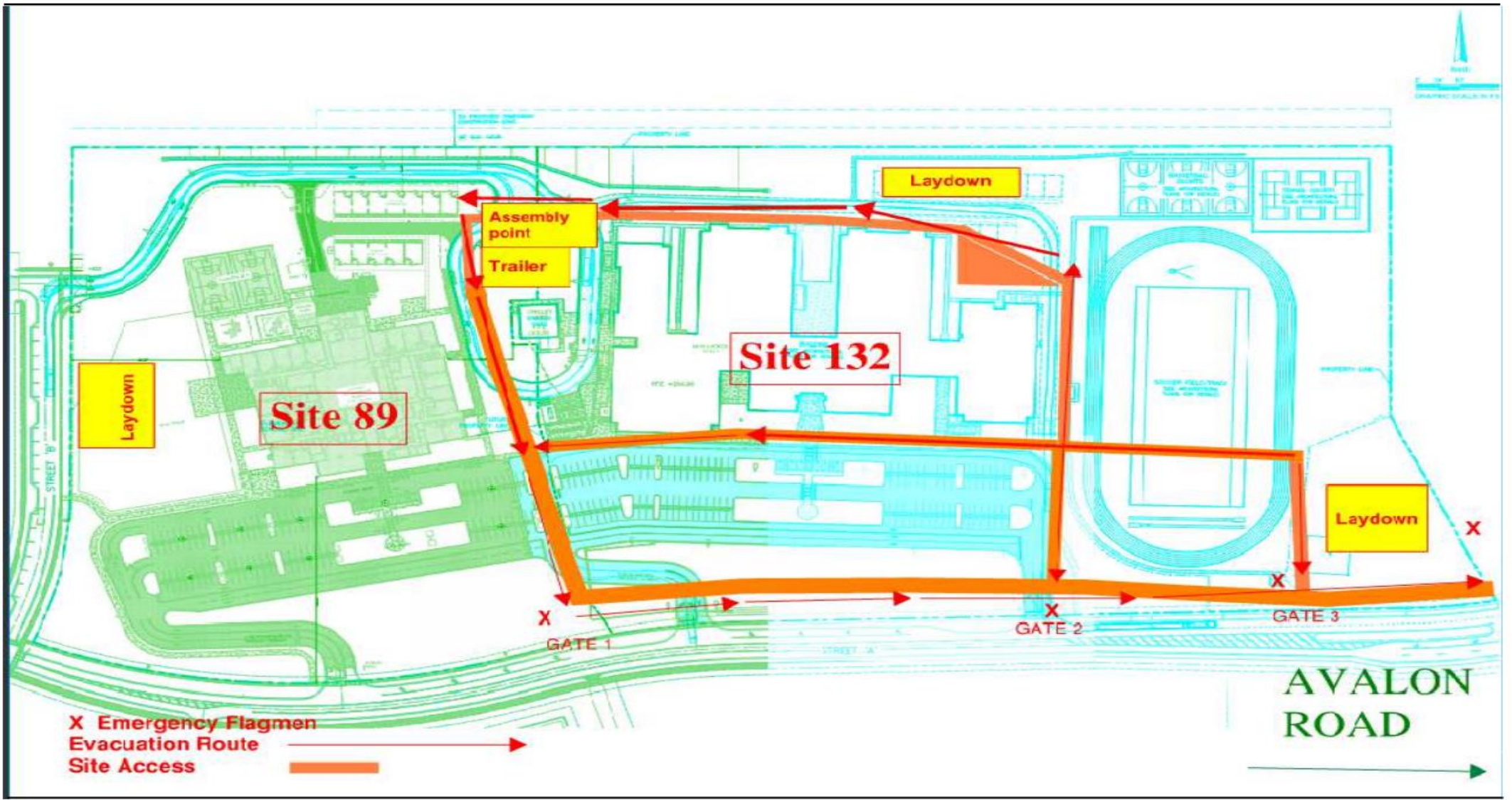


Design & Construction Schedule



Current Activities Include:

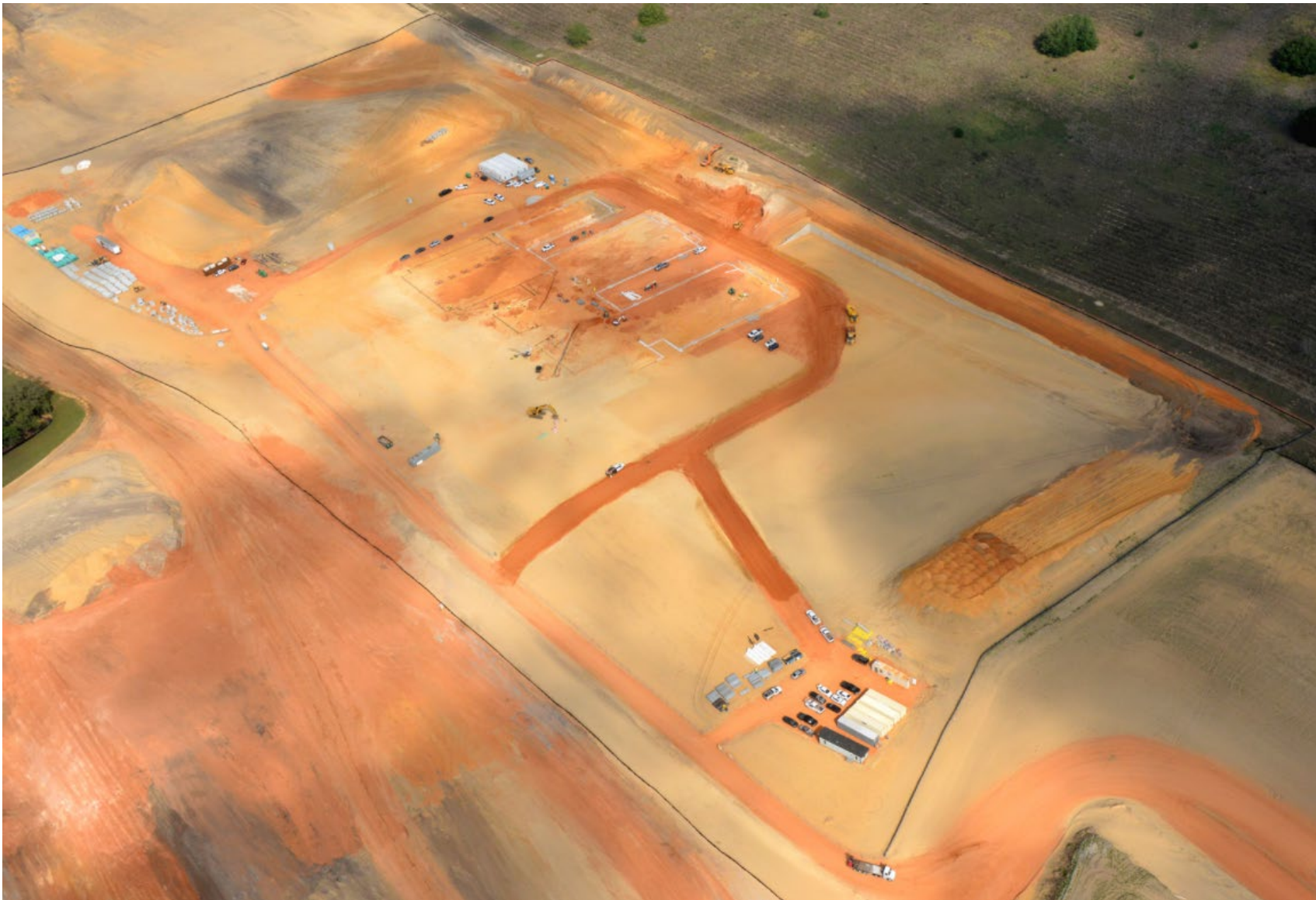
- Framing
- Spray Fireproofing
- Chilled Water Piping Installation
- Site Utility Pipe Installation
- Exterior Prime/Paint
- Electrical Rooms Layout/Rough-in
- Grading for Site Amenities
- Roofing
- Elementary School Tilt Panels



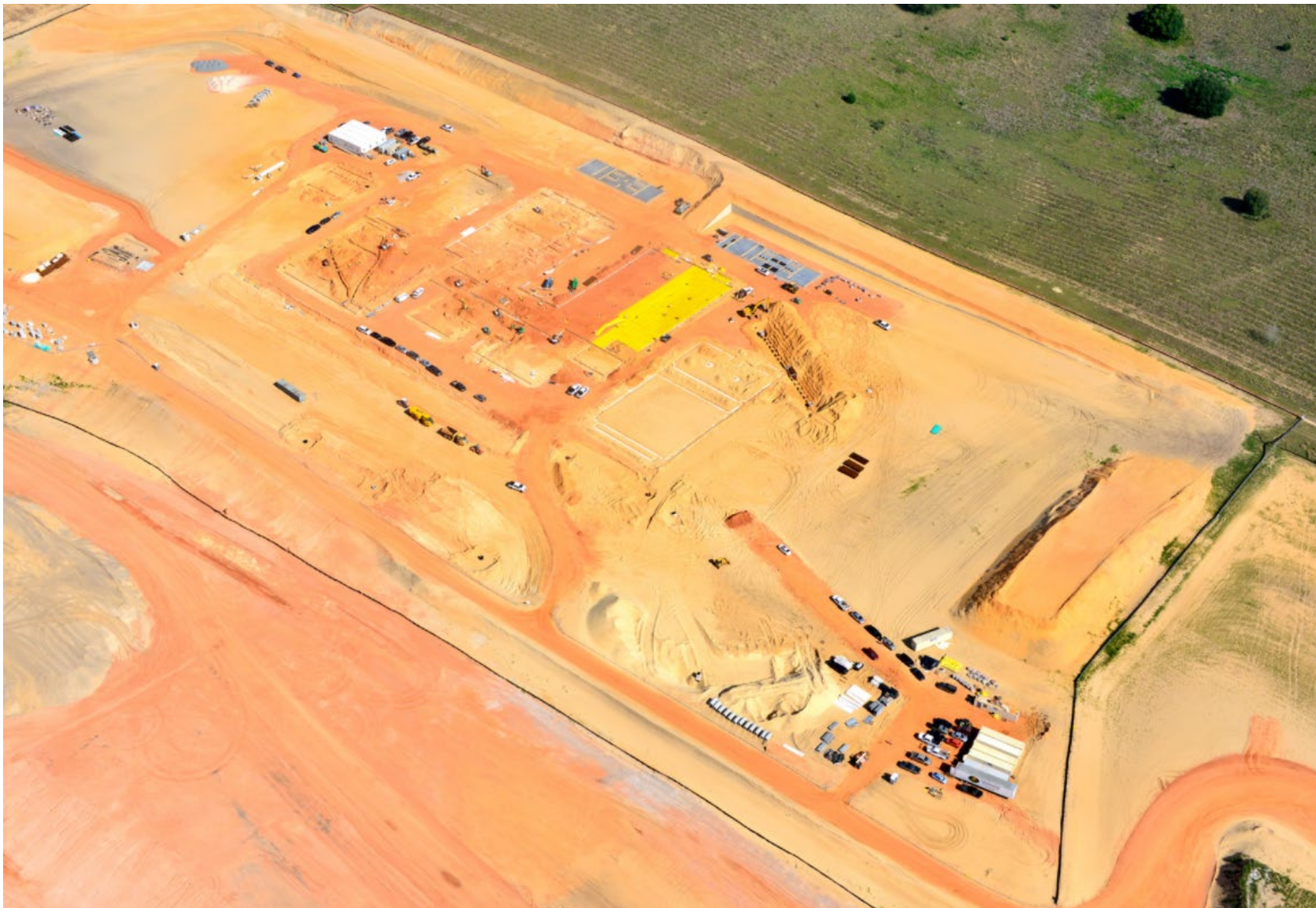


Above is an aerial view from the SE corner looking NW at Sites 89 & 132

February 2021



Above is an aerial view from the SE corner looking NW at Site 132 building foundations and foundation prep
March 2021



Above is an aerial view from the SE corner looking NW at Site 132 MEP underground and slab prep
April 2021



Above is an aerial view from the SE corner looking NW at Site 132 underground, slab and tilt panel prep
May 2021



Above is an aerial view from the East looking West at Site 132 tilt panels on Slab on Grade and casting beds, and slab prep; and Site 89 building pad prep

June 2021



Above is an aerial view from the SE corner looking NW at Site 132 tilt panel erection and steel placement, and Site 89 building foundation prep
July 2021



Above is an aerial view from the SE corner looking NW at Site 132 steel and roof deck placement, and Site 89 underground, slab on grade prep, and tilt panel casting beds

August 2021



Above is an aerial view from the SE corner looking NW at Site 132 roof prep and prime paint of exterior, and Site 89 tilt panel prep
September 2021



April - above is Slab on Grade pour of Building 4 looking west



May - above is Slab on Grade pour of Building 2 looking west

April & May 2021 Job Activities



Above is tilt panel prep



Above is tilt panel formwork with rebar, steel embed and blockout placements



Above is prep of crane for tilt panel erection



Above is erection of tilt panels at Building 5 looking SE

July 2021 Job Activities



Above is placement of steel joists

August 2021 Job Activities



Above is placement of steel joists and metal roof decking of Buildings 5, 1 and 4 from North looking South

Below is firespray placement on Building 5 steel beams



Above is metal framing installation in Building 5



Below is rough in of Building 1 Electrical room



Above is detailing of steel joist and metal decking installation in the Gym

Below is prime paint and texture coating on Building 5 tilt panels from NE looking SW



September 2021 Job Activities



Questions & Answers