



40% Construction Community Meeting

Site 50-H-SE-2

October 12, 2023

Please sign in on your mobile device:
<https://communitymeeting.ocps.net/>



 **Orange County
Public Schools**

Site 50-H-SE-2

Meeting Agenda

Meeting October 12, 2023 at 6 p.m.

- Welcome: School Board Member Maria Salamanca
- Introductions: Andy Orrell, Facilities Communications
- Project Update
 - Zyscovich Architects
 - CORE | HORUS Construction
- Questions and Answers
- Adjournment



Welcome Message
from
School Board Member District 2
Maria Salamanca



Introductions
by
Senior Manager,
Facilities Communications
Andy Orrell



Site Location



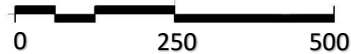
Site Plan



School Main Entrance



Vehicular Gates



Student Capacity

3,240 Student Capacity

Provided Separate Parent and Bus Loops

Separate Parent and Bus Loops will be provided from Dowden Road (Buses) and Founders Street (Student Drop Off).

On-Site Car Stacking

Queuing for 162 vehicles which amounts to 6,840 feet will be provided.

On-Site Bus Stacking

Queuing for 76 buses will be provided.

On-Site Parking

Parking for 975 vehicles will be provided.



Project Stats



3,240 STUDENT CAPACITY



61.5 ACRES



\$198 M



OPENING 2024



New High School Program

- Classrooms
- Science Labs
- CTE Labs
- Art Labs
- Performing Arts Labs
- Auditorium
- Gymnasium
- Commons Dining
- Media and Genius Bar
- On-Site Football Stadium
- Athletic Amenities
- Car Loop and Bus Loop
- Visitor Parking
- Student & Teacher Parking
- Secured Single Entry
- Advanced Technology
- Sustainable Bldg. Systems
- High Energy Performance

Community Survey Input

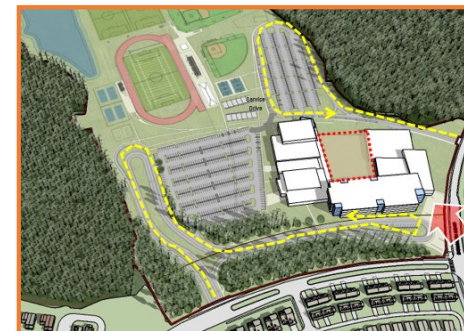
Sustainability

Showplace for Carbon Neutral Goals, Urban Agriculture, Native Wetlands Conservation, Xeriscape, High Energy Performance Building Design



Site Circulation

Smart and Efficient Site Entry and Car Loop / Drop-Off Design, Ample Parking for Activities, Student Not Exiting onto Dowden Road



Average of 85 Responses / Questions from the 10% Design Community Meeting

Sustainability

Site 50-H-SE-2 designed to meet Green Globes sustainable building standards metrics.



Sustainable Design and Engineering Features Include:

High Performance Envelope / Low Energy Footprint

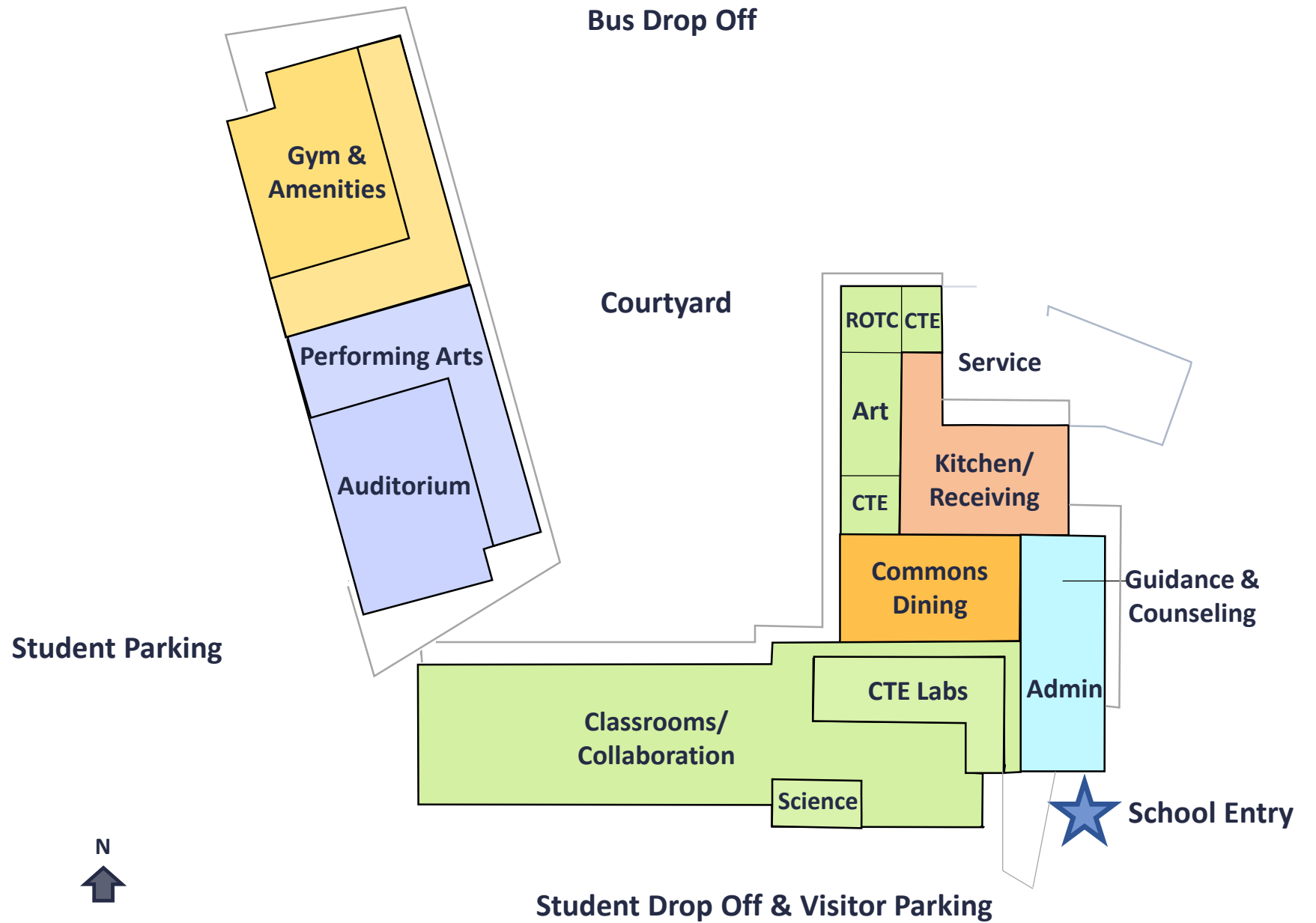
Site

- Native/low water plants – reduce water consumption; and
- Low Impact Design (LID) stormwater design.

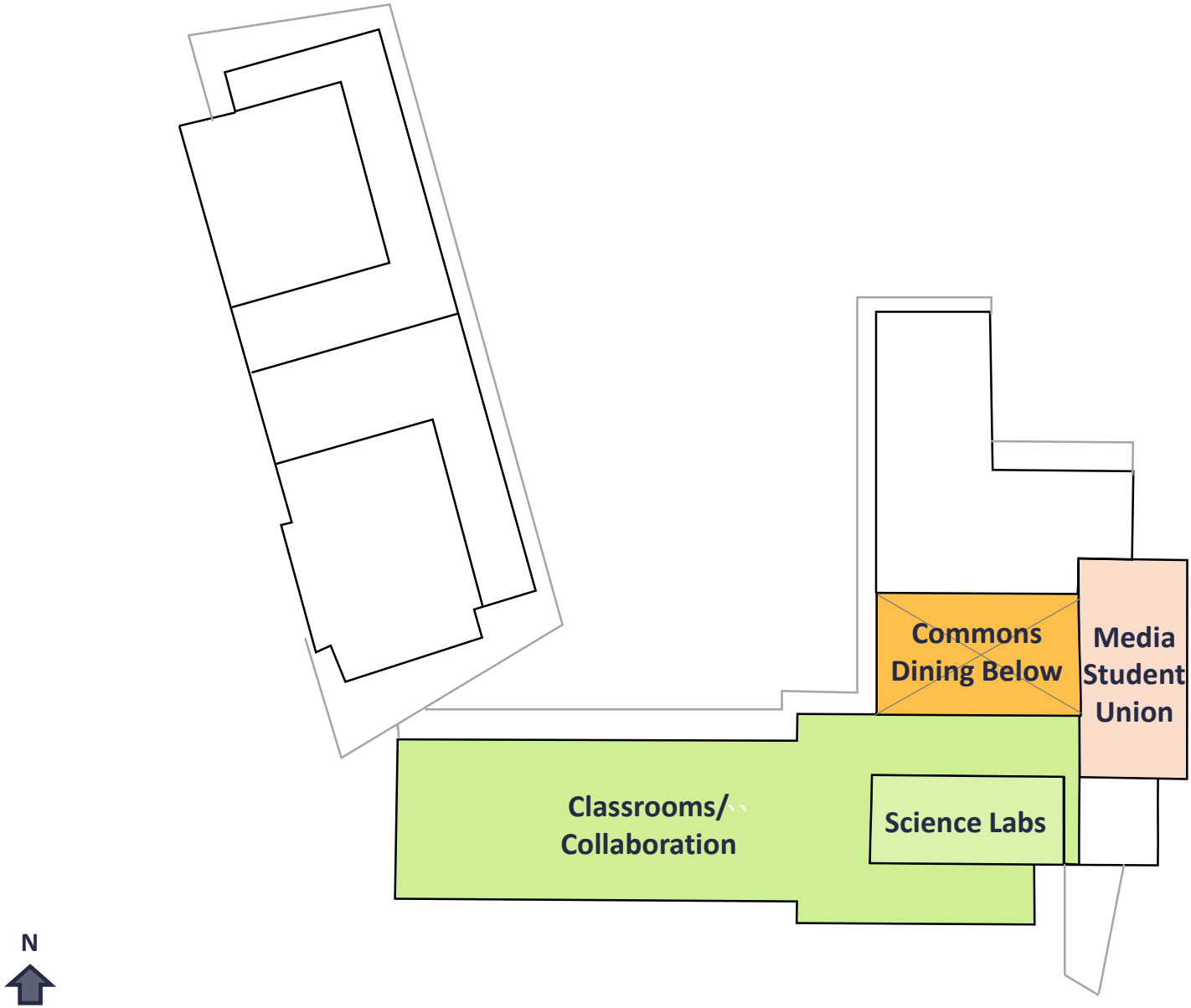
Building

- 10% more energy efficient than ASHRAE 90.1 Standard;
- High Efficiency Chillers (8-15% energy reduction);
- Net-zero energy ready with efficient EUI;
- Advanced daylight harvesting controls and multi-level switching;
- Energy Star rated equipment;
- Water saving toilets, faucets, and fixtures;
- Most general classrooms have natural daylighting;
- Thermal efficient windows/glazing;
- High thermal performance building envelope; and
- Fully automated building controls systems.

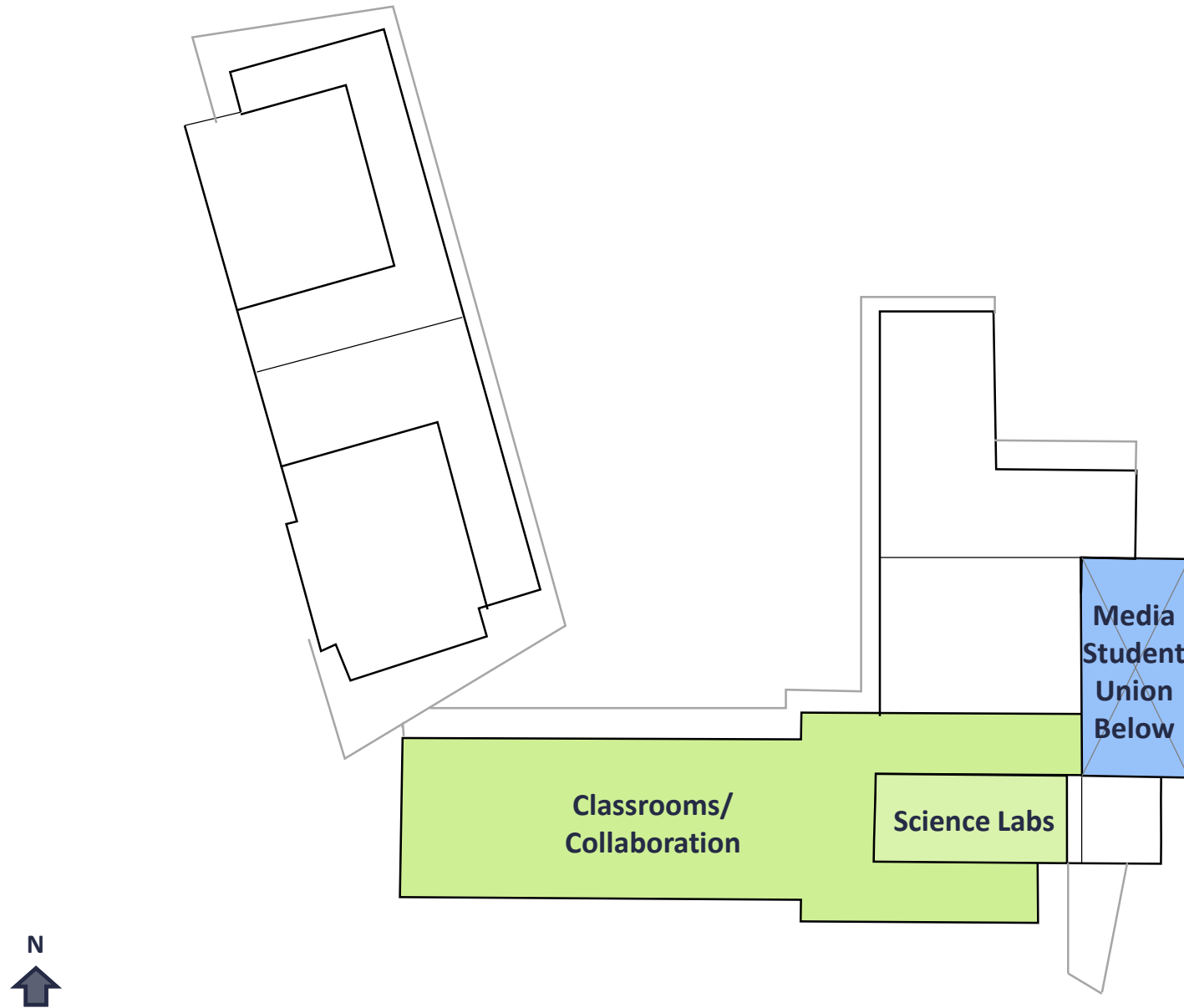
1st Floor



2nd Floor



3rd Floor



Site Aerial

Building Exteriors

Signature Spaces

Signature Interiors



Site Aerial

Building Exteriors

Signature Spaces

Signature Interiors



Dowden Road Entry & Parent Drop-off

Site Aerial

Building Exteriors

Signature Spaces

Signature Interiors



Auditorium Entry

Site Aerial

Building Exteriors

Signature Spaces

Signature Interiors



Gymnasium Entry

Site Aerial

Building Exteriors

Signature Spaces

Signature Interiors



Secured Courtyard

Site Aerial

Building Exteriors

Signature Spaces

Signature Interiors



Secured Courtyard

Site Aerial

Building Exteriors

Signature Spaces

Signature Interiors



Secured Courtyard

Site Aerial

Building Exteriors

Signature Spaces

Signature Interiors



Cafeteria & Learning Stair

Construction Progress



MASS GRADING



FOUNDATIONS



STRUCTURE



BUILDING ERECTION



Construction

STARTED AUG 29, 2022

- Drone Photo Comparison
- First Image – JUL 28, 2022
- Second Image – SEP 20, 2023



Mass Grading

Foundations

Structure

Building Dry-In

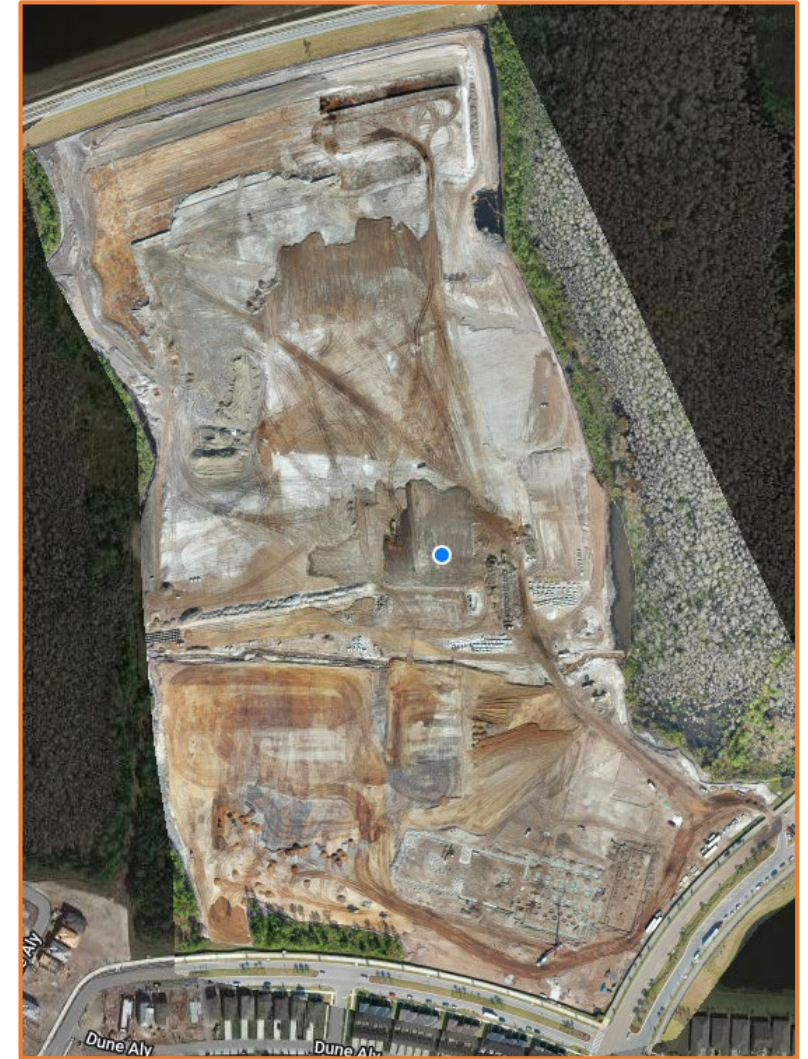
EXISTING SITE – JULY 22



CLEARING – SEP. 22



IMPORT FILL – OCT. 22



Mass Grading

Foundations

Structure

Building Dry-In

STARTED JAN. 23



Mass Grading

Foundations

Structure

Building Dry-In

FIRST TILT-UP CONCRETE WALL PANEL LIFTED ON MAY 3, 2023



Mass Grading

Foundations

Structure

Building Dry-In

ROOFING ACTIVITIES STARTED JULY 23



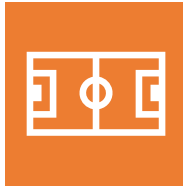
Remaining Construction



INTERIOR ROUGH



INTERIOR FINISHES



ATHLETIC FIELDS



LANDSCAPE & HARDSCAPE



Construction Schedule Overview

SEP '22

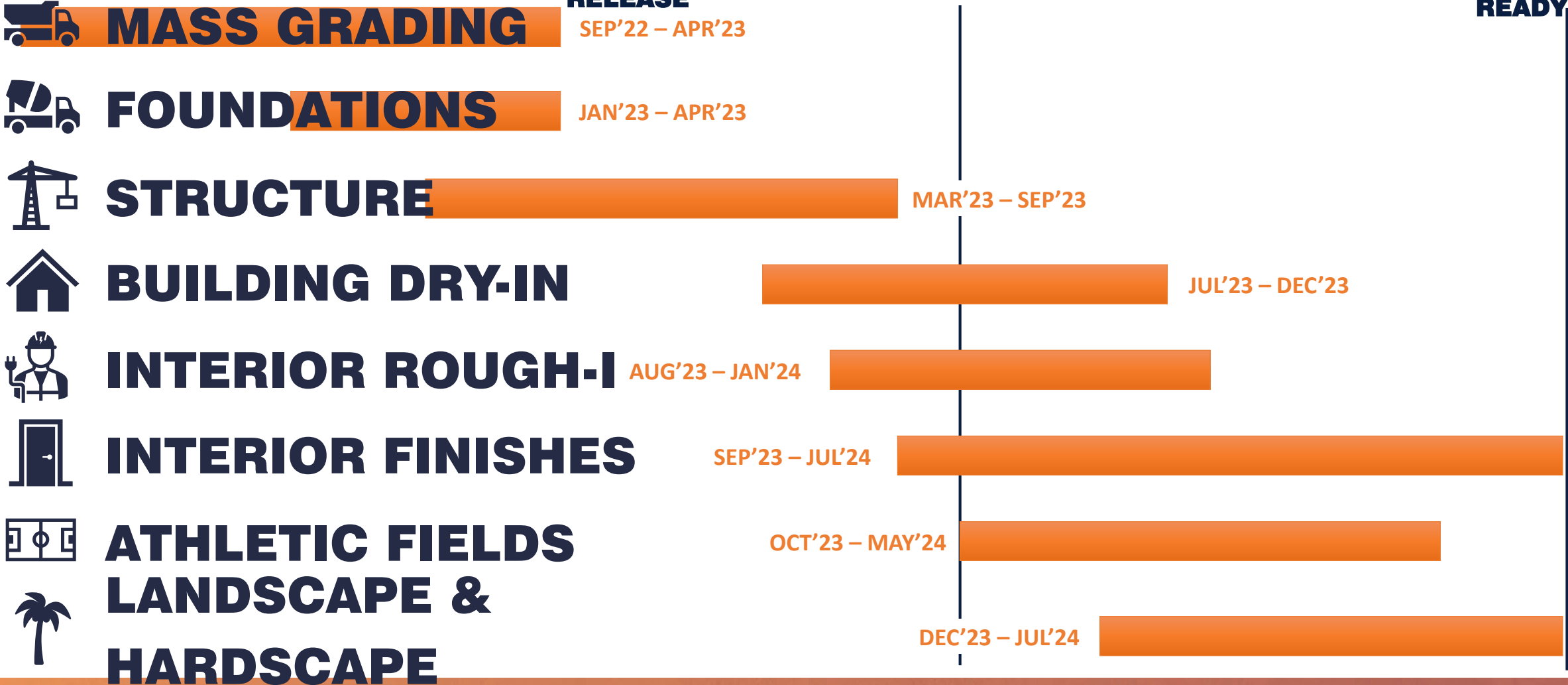
OCT '23

JUL '24

FULL
RELEASE

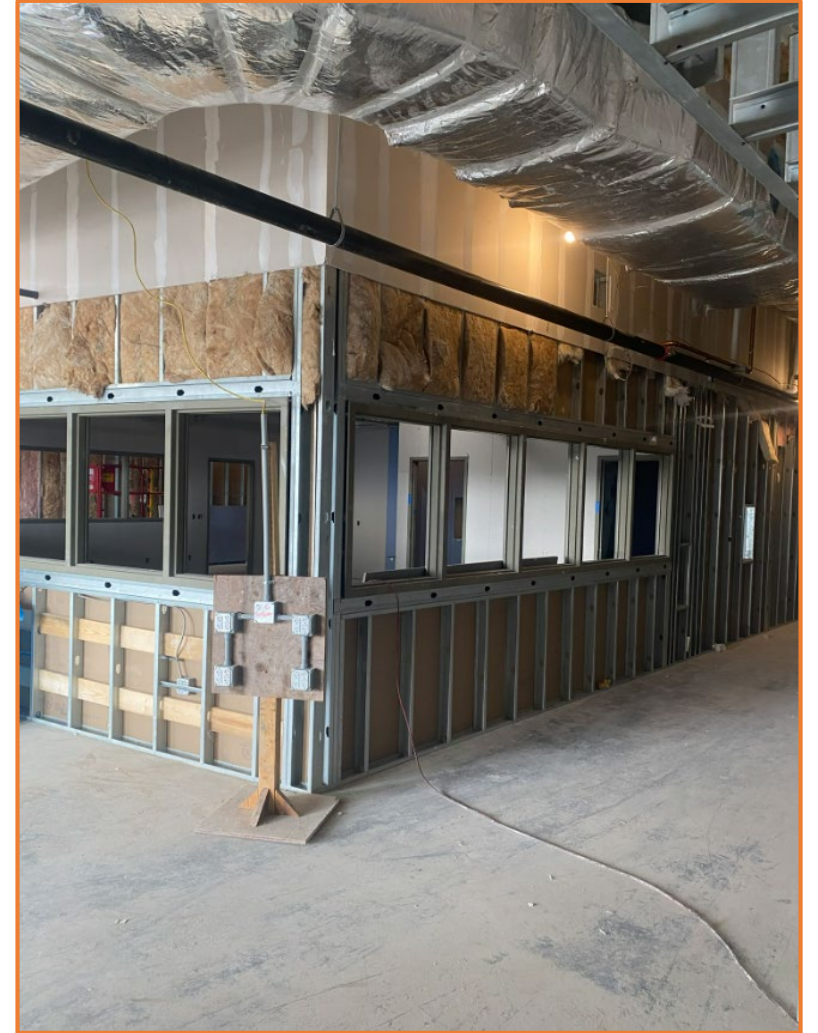
TODAY

MOVE-IN
READY



Already Underway...

INTERIOR ROUGH-IN & FINISHES



Site 50-H-SE-2 High School



10.11.2023

CORE HORUS

This Community Meeting Presentation is posted
at facilities.ocps.net and on the School Board Member's page.

Our Promise. Your Support. Their Success.

Our Promise. Your Support. Their Success.

Our Promise. Your Support. Their Success.

Thank You

