

February 15, 2022

5:30 PM

40% Construction Community Meeting

Site 89-E-W-4

Welcome! This meeting will begin shortly.



**Orange County
Public Schools**

Site 89-E-W-4

Meeting Agenda

February 15, 2022, 5:30 PM

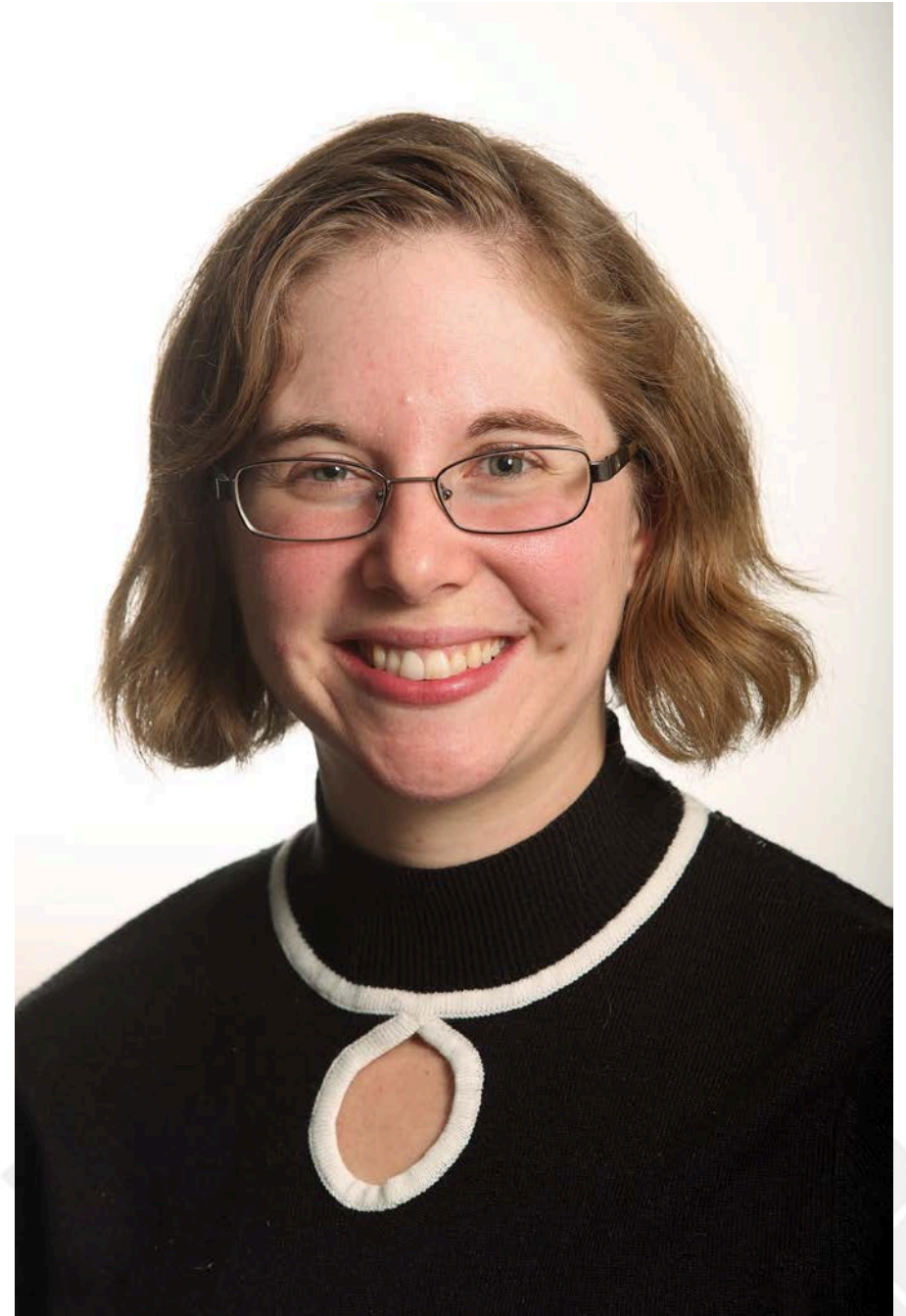
- Welcome – School Board Member Pam Gould
- Introductions – Lauren Roth, Facilities Communications
 - School Naming Information – Dr. Angela Murphy-Osborne, Principal
- Project Update –
 - Architect: David Torbert, AIA, NCARB **SCHENKELSHULTZ**
■■■■ ARCHITECTURE ■■■■
 - Construction Manager: Jeff Carter, Welbro Building Corporation
- Questions and Answers
- Adjournment

***Welcome Message from
District 4 Board Member
Pam Gould***



***Introductions by Senior manager,
Facilities Communications***

Lauren Roth

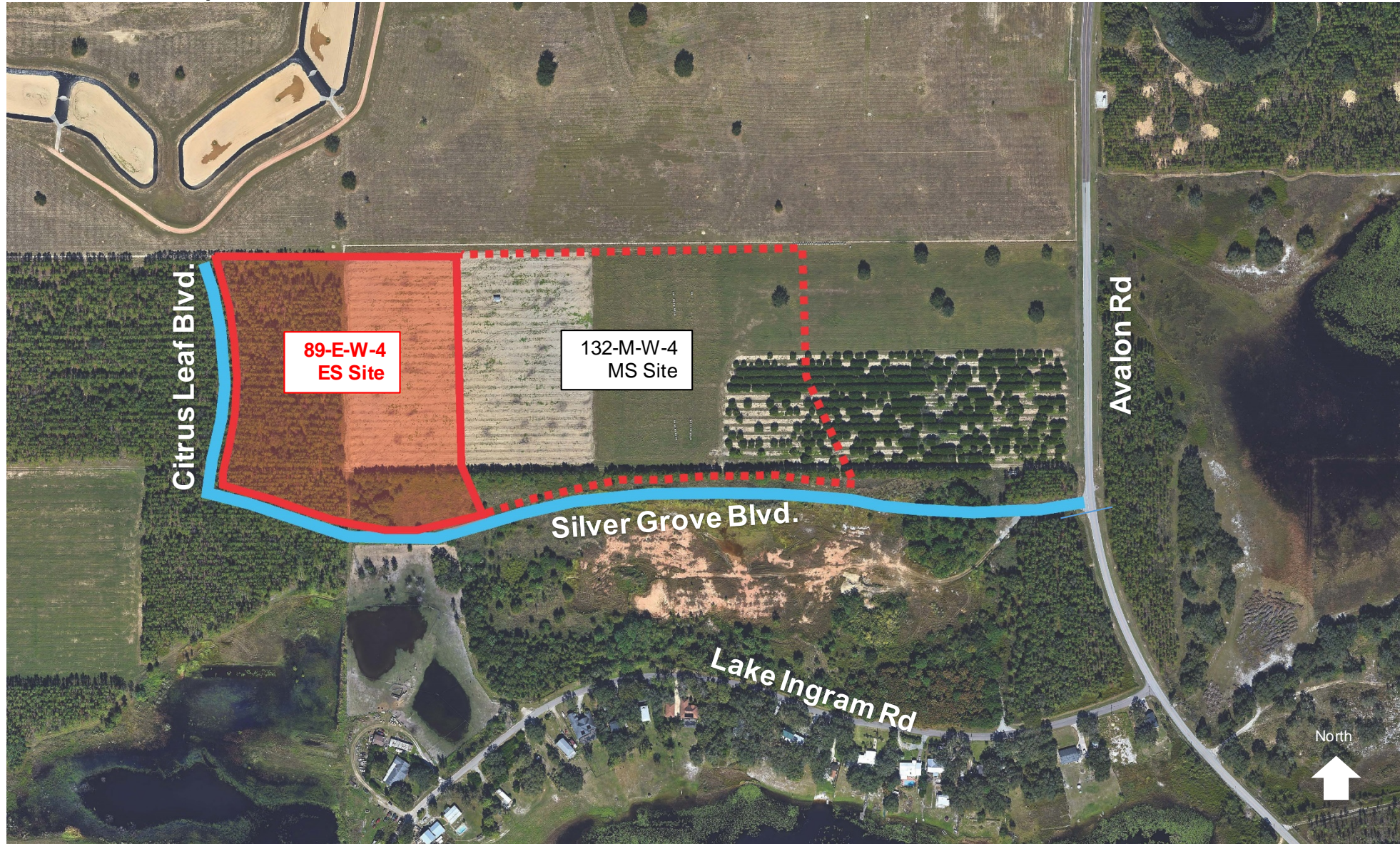


School Naming Information by

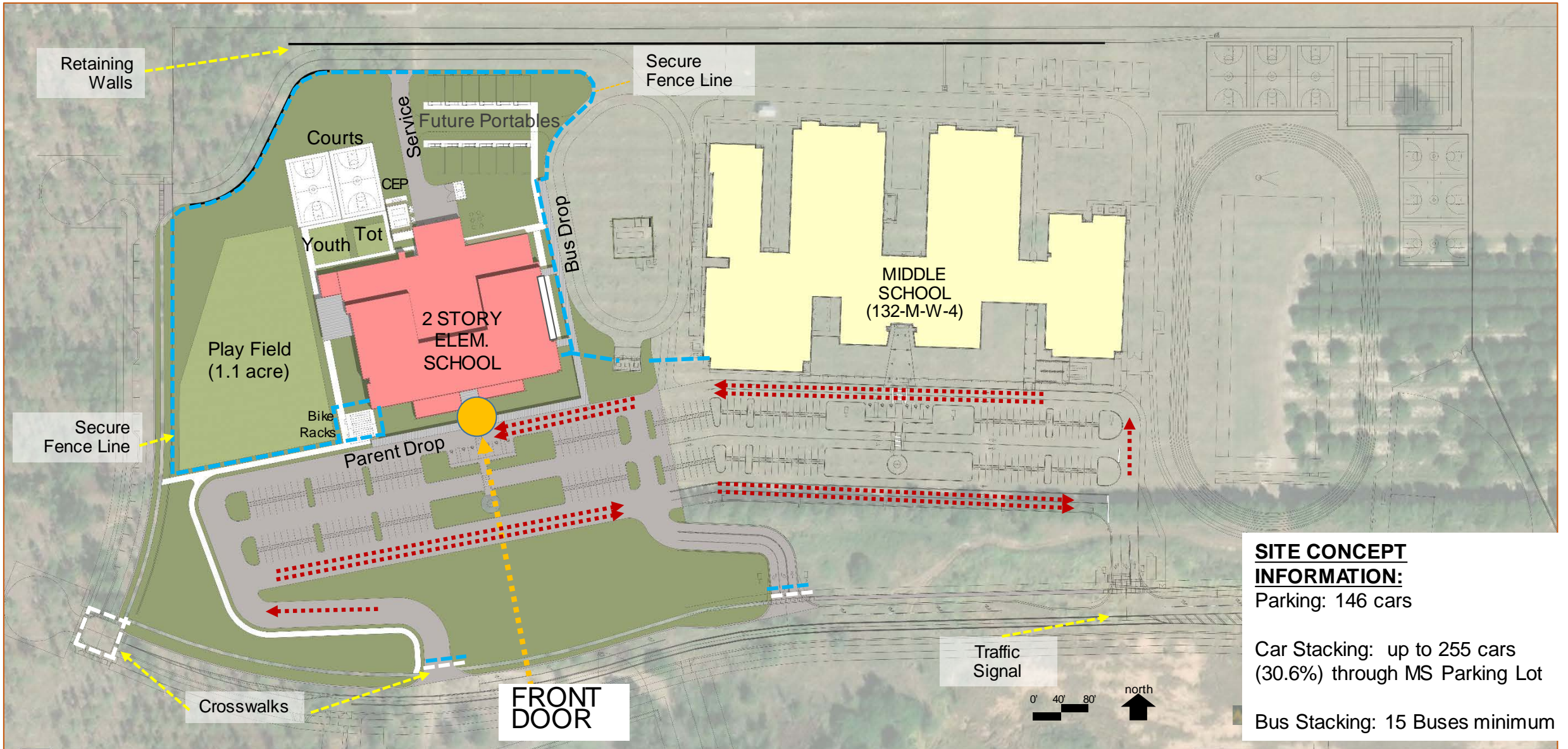
Principal Dr. Angela Murphy-Osborne



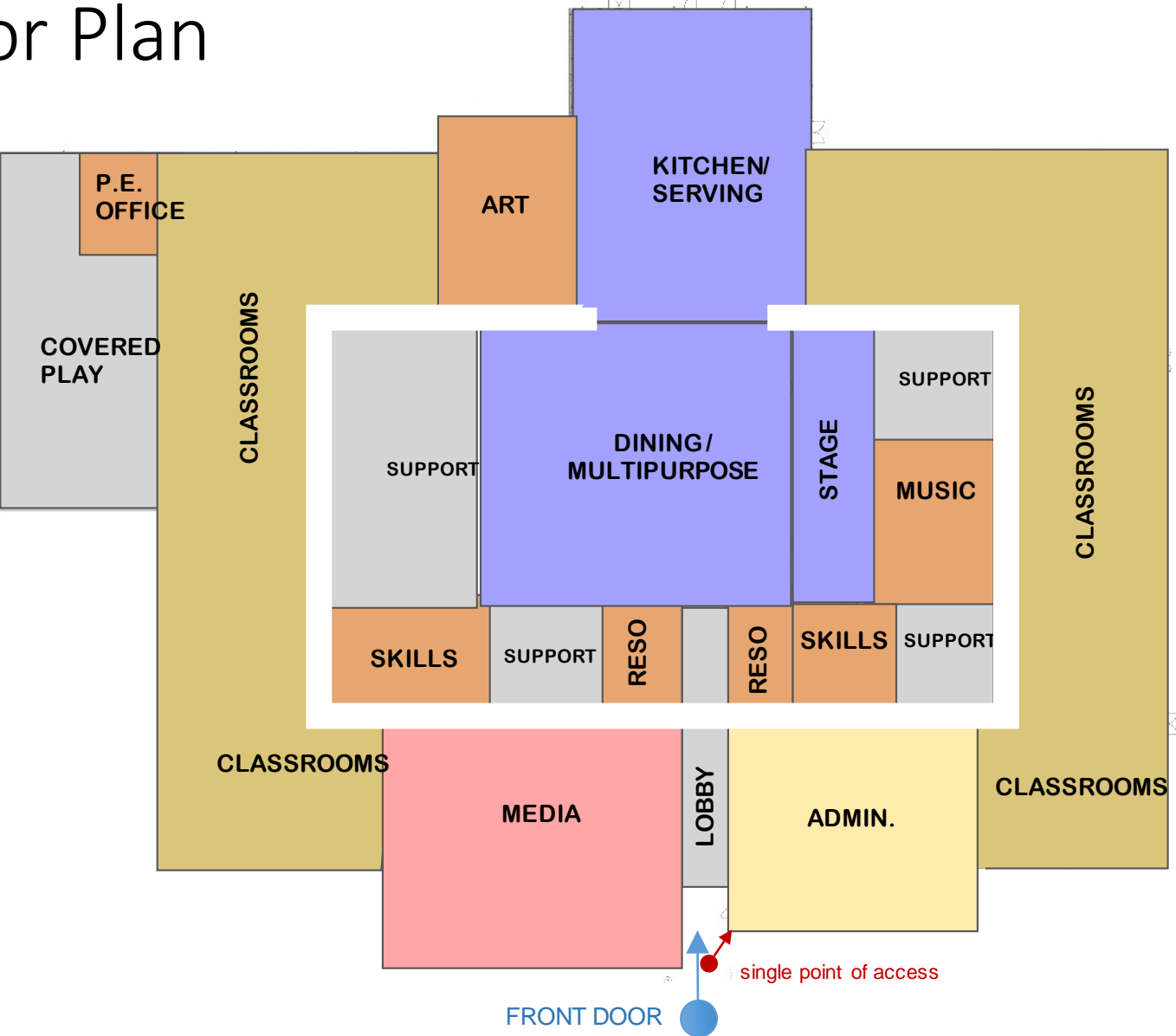
Site Aerial Map



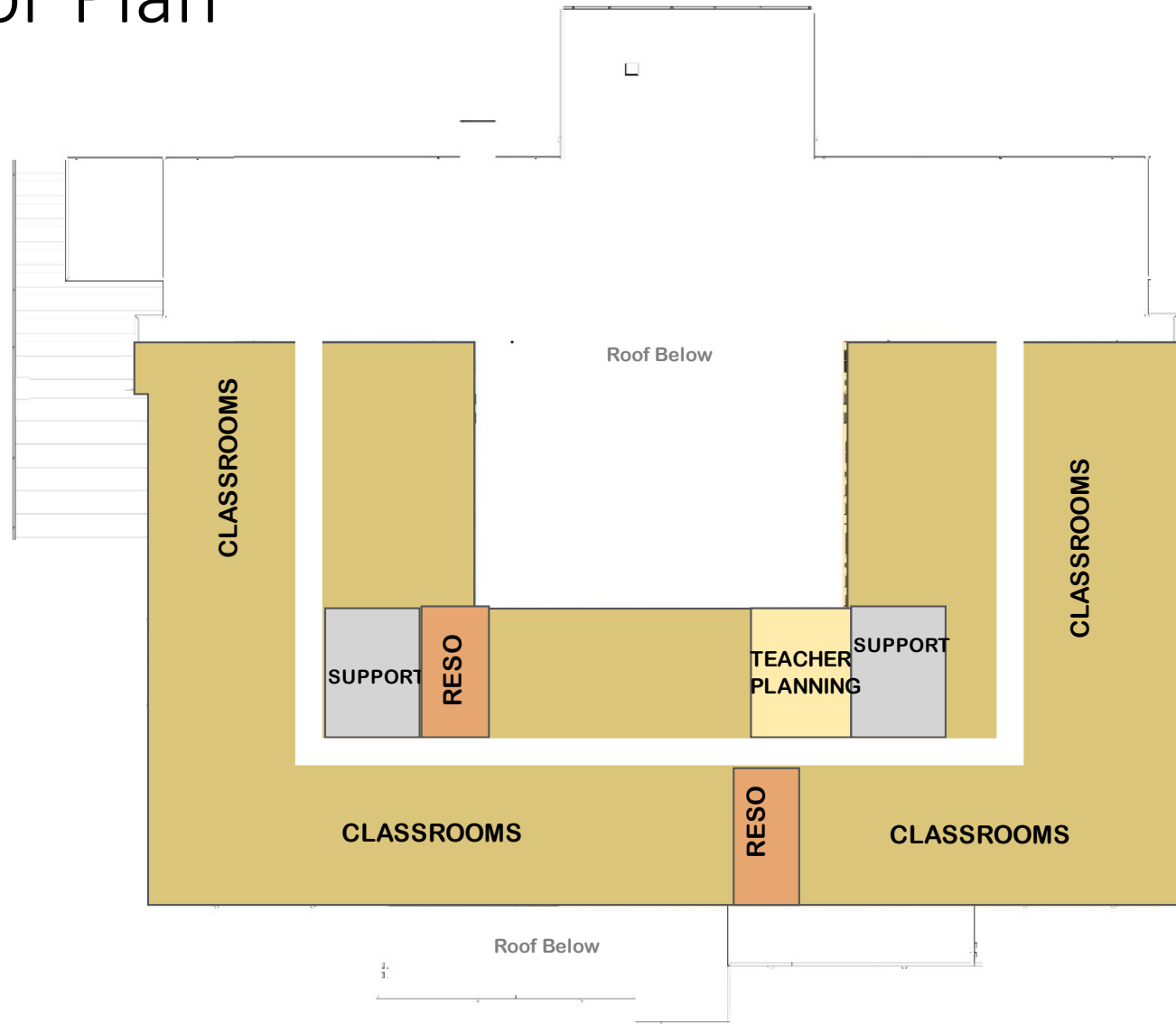
Site Plan



First Floor Plan



Second Floor Plan



Exterior Elevation Looking NE toward front entry



Exterior Elevation Aerial



Interior Spaces

Example images from previous projects



Interior Spaces



Exterior Spaces



COVERED PLAY CANOPY



SHADED TOT LOT



OUTDOOR COURTS



PLAY LOTS

Sustainability 89-E-W-4

Sustainable Design Criteria



Site 89-E-W-4

Building

- 10% more energy efficient than ASHRAE 90.1 standard
- High Efficiency Chillers (15% energy reduction)
- Light colored roof to reduce heat gain and improves energy performance
- Energy Efficient LED Lighting
- Energy Star rated equipment
- Water saving toilets, faucets, and fixtures
- All classrooms have daylighting
- Over 75% of ALL spaces have daylighting
- Thermal efficient windows/glazing

Site

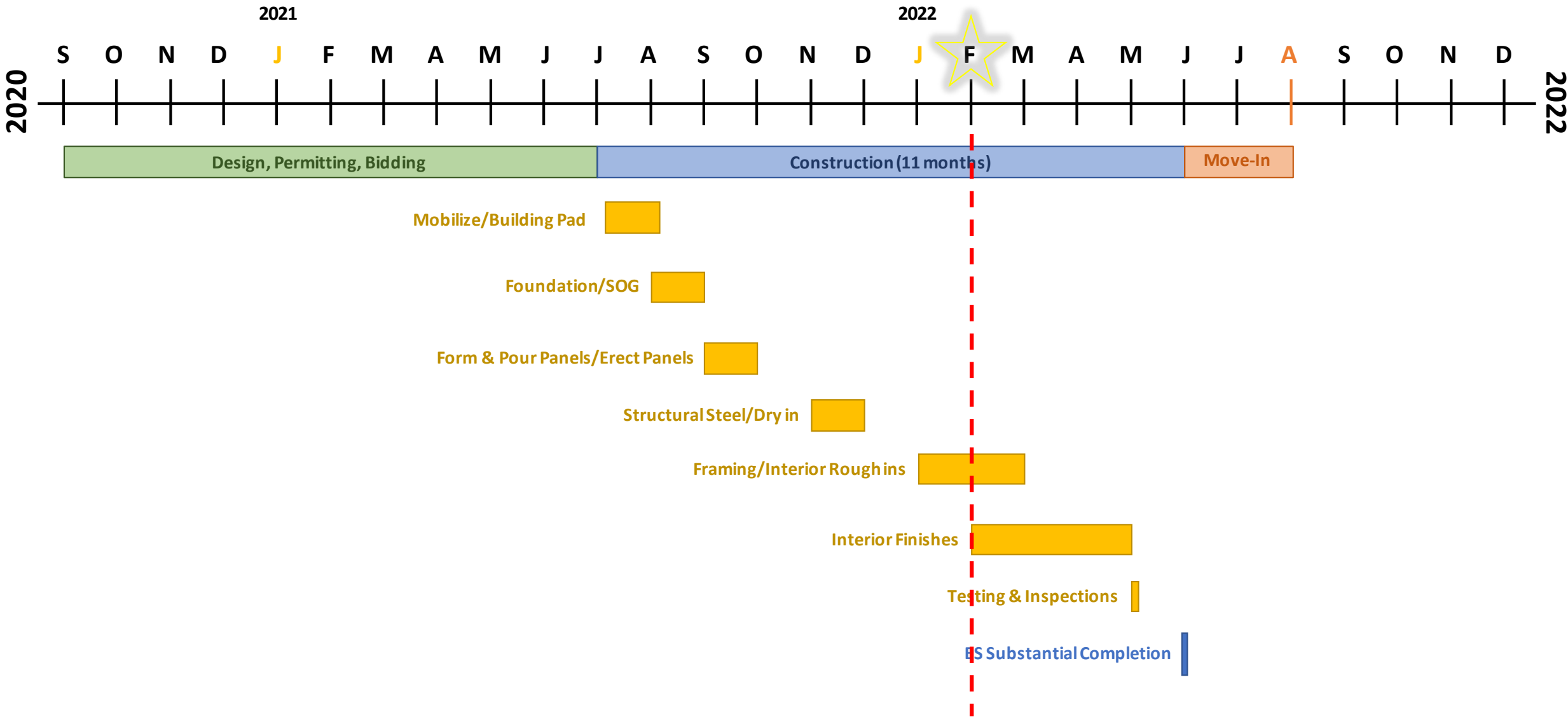
- Native/low water plants – reduce water consumption
- Low Impact Design (LID) stormwater design

PREVIOUS OCPs SCHOOLS USING THE SAME/SIMILAR PROTOTYPE

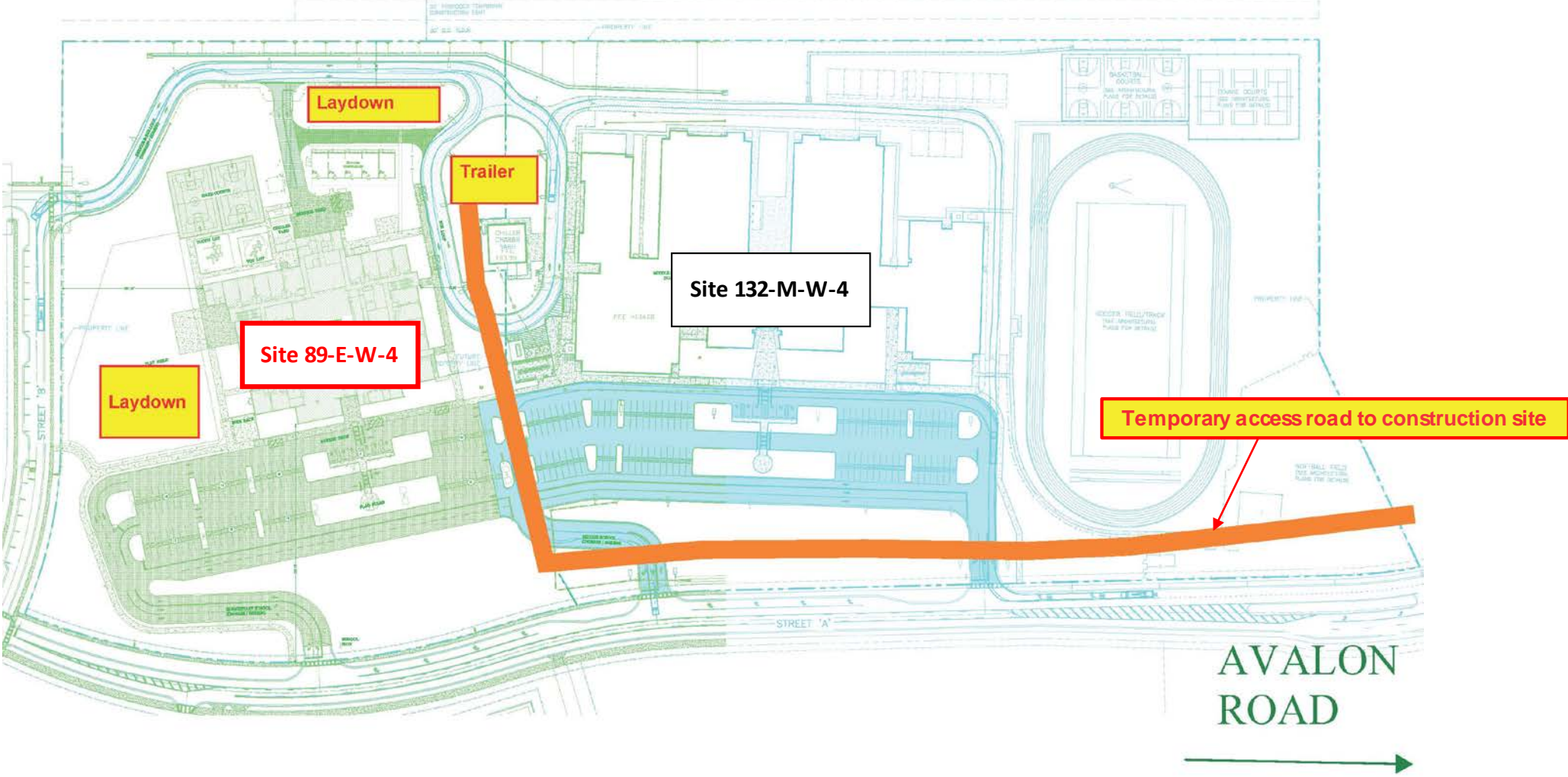
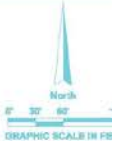
- **Water Spring Elementary School**
- Winegard Elementary School
- Pinar Elementary School
- Hungerford Elementary School Replacement
- Deerwood Elementary School Replacement
- Maxey ES Replacement / Site 207-E-W-7
- Laureate Park Elementary School
- Meadow Woods Elementary School Replacement
- Ventura Elementary School Replacement
- Bay Lake Elementary School
- **Independence Elementary School**
- Eagle Creek Elementary School
- John Young Elementary School Replacement
- Wheatley Elementary School
- Shingle Creek Elementary School Replacement
- Prairie Lake Elementary School
- Sun Blaze Elementary School
- SunRidge Elementary School
- Forsyth Woods Elementary School
- **Keene's Crossing Elementary School**
- Westbrooke Elementary School
- Audubon Park Elementary School
- Sunset Park Elementary School
- Columbia Elementary School
- Moss Park Elementary School
- Catalina Elementary School
- Wyndham Lakes Elementary School
- Wolf Lake Elementary School
- Castle Creek Elementary School
- Stone Lakes Elementary School
- Millennia Elementary School
- Vista Lakes Elementary School
- Sand Lake Elementary School
- **Whispering Oak Elementary School**
- McCoy Elementary School
- Andover Elementary School
- East Lake Elementary School
- West Oaks Elementary School
- West Creek Elementary School
- Dillard Street Elementary School
- Hiawassee Elementary School
- Eagle's Nest Elementary School
- Thornebrooke Elementary School
- Three Points Elementary School
- Avalon Elementary School
- Camelot Elementary School
- Endeavor Elementary School
- Citrus Elementary School
- NorthLake Park Community School
- Riverdale Elementary School
- Lakeville Elementary School
- Lawton Chiles Elementary School

Schools identified in red text are neighboring schools

Design & Construction Schedule



Construction Site Logistics Plan





June 2021: Site 89 building pad prep; Site 132 tilt panels on Slab on Grade and casting beds (*aerial view from the North looking South*).



July 2021: Site 89 underground foundations; Site 132 tilt panel erection and steel placement (*aerial view from the West looking East*).



August 2021: Site 89 underground MEP install in progress and prepping for the Slab on Grade Pour #1 (*aerial view from the West looking East*).



September 2021: Site 89 SOG is poured and the tilt panels are being formed and poured on the SOG/casting beds (aerial view from the Northwest looking Southeast).



October 2021: Site 89 tilt panels are erected in place and structural steel erection is progress (*aerial view from the Southeast looking Northwest*).



November 2021: Site 89 structural steel install is complete and roof deck is installed (*aerial view from the Southeast looking Northwest*).



December 2021: Site 89 lightweight insulating concrete (LWIC) installed on High Roof and prepping for install on Low Roof; Covered Play Area columns installed (*aerial view from the Northwest looking Southeast*).



January 2022: Site 89 LWIC completed; Covered Play Area beams and deck installed; grease traps installed; removal of dirt in preparation for sanitary install (*aerial view from the Northwest looking Southeast*).



August:
MEP
rough-in
and Slab
on Grade
prep



September:
tilt panels
forming,
reinforcing
and pour



Tilt panels erection and bracing

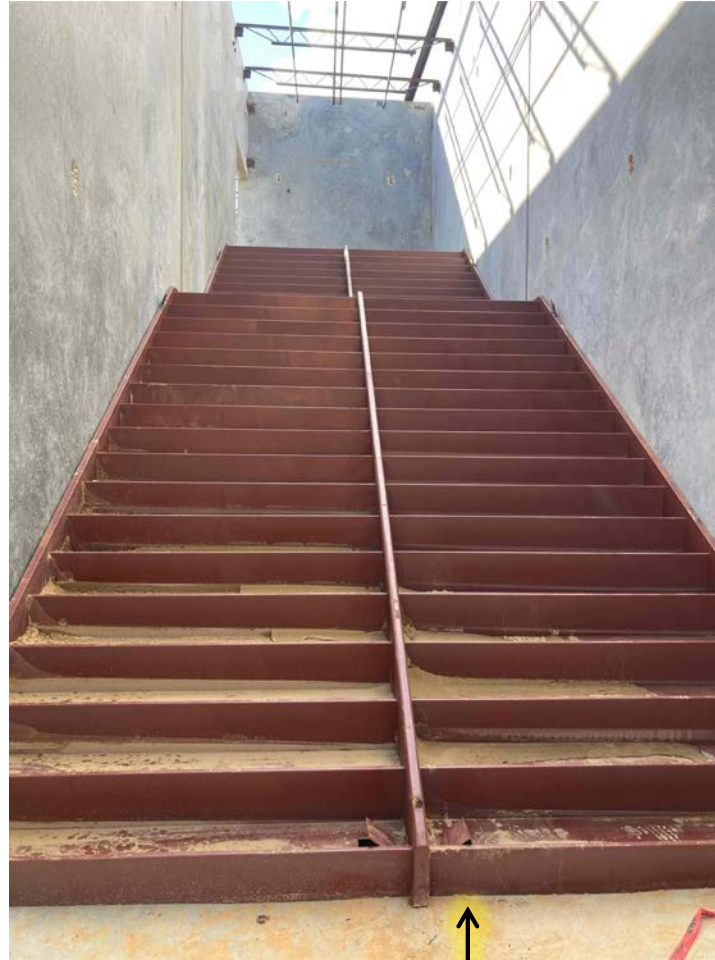


Erection, bolting and welding of structural steel beams, columns and joists.





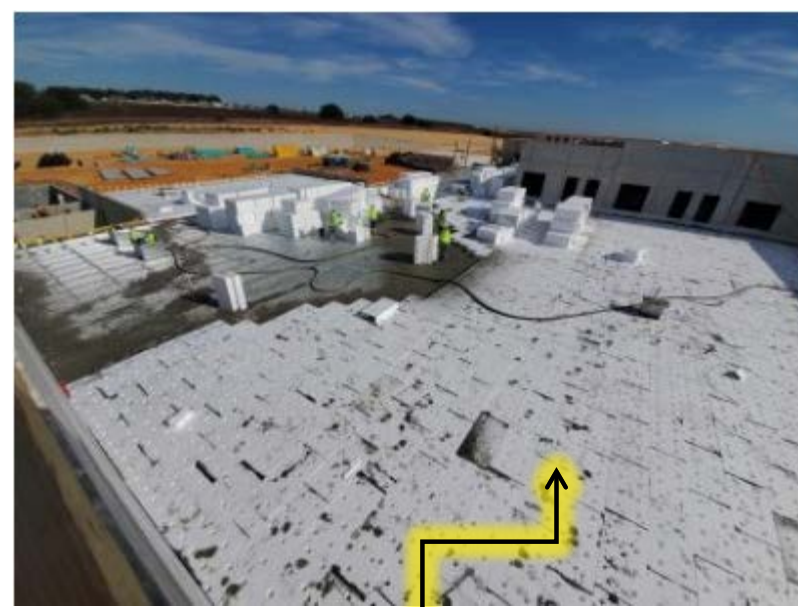
Roof decking install complete at Low & High Roofs



Stair pans installed

Interior MEP rough-in install is progress





LWIC install

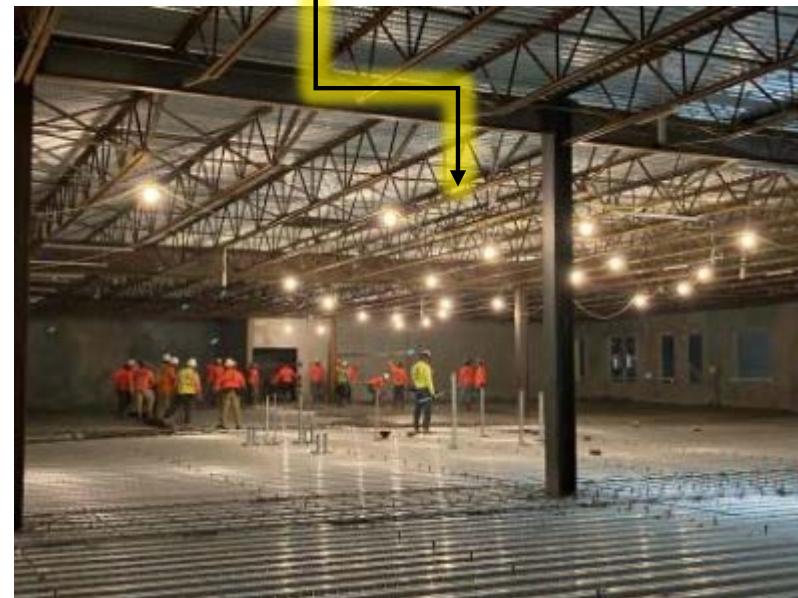
Concrete pour on the 2nd floor deck

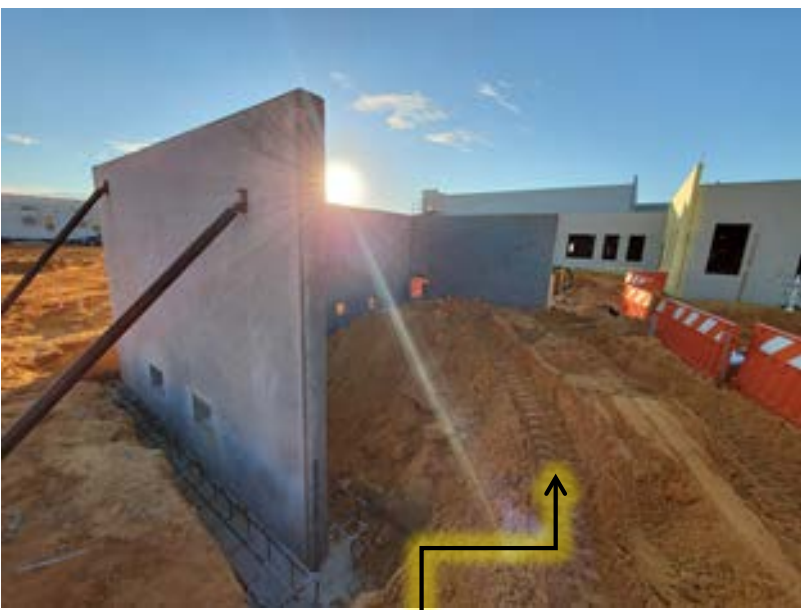


Fireproofing of columns, beams and joists



Exterior painting
Grease traps install

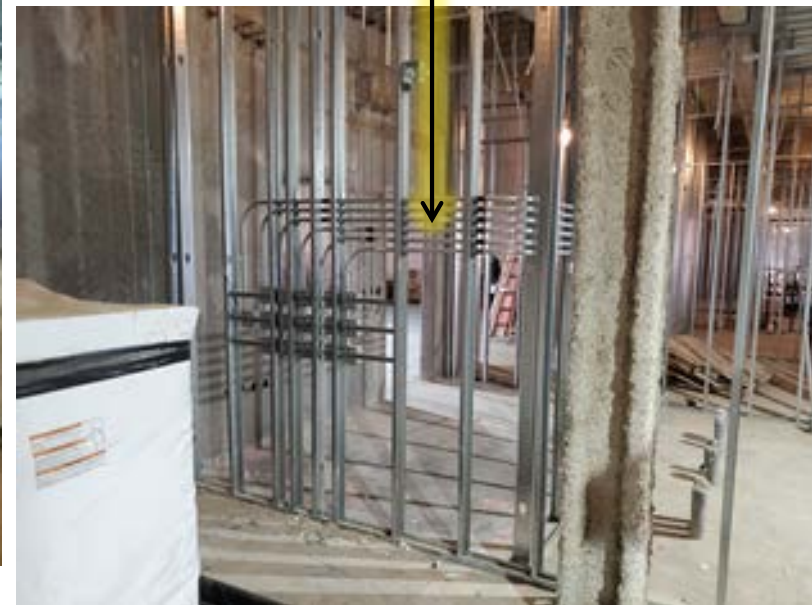
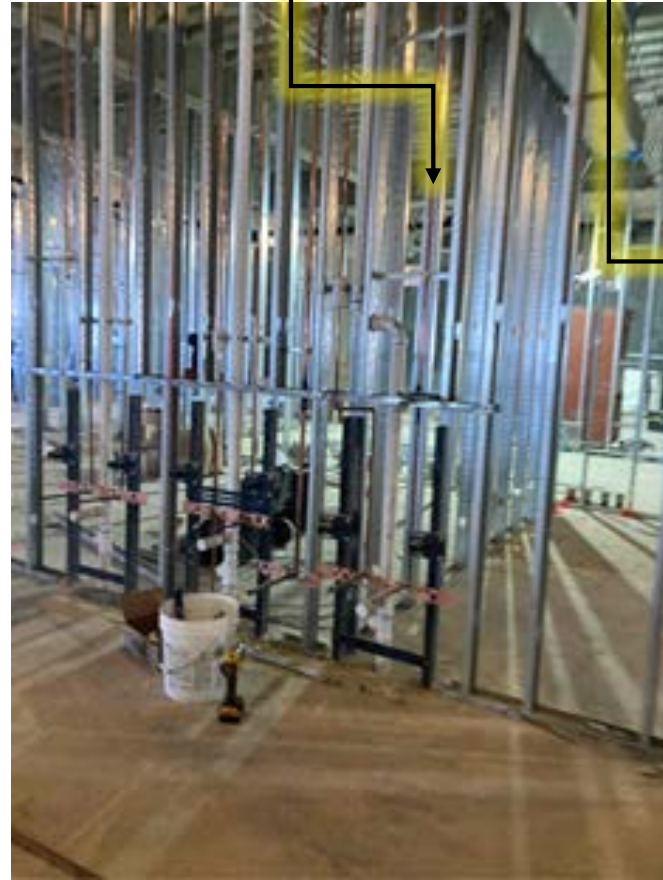




Dumpster walls erected
Sanitary underground install in progress



Metal framing and MEP wall
rough-in in progress on 1st floor



Questions and Answers